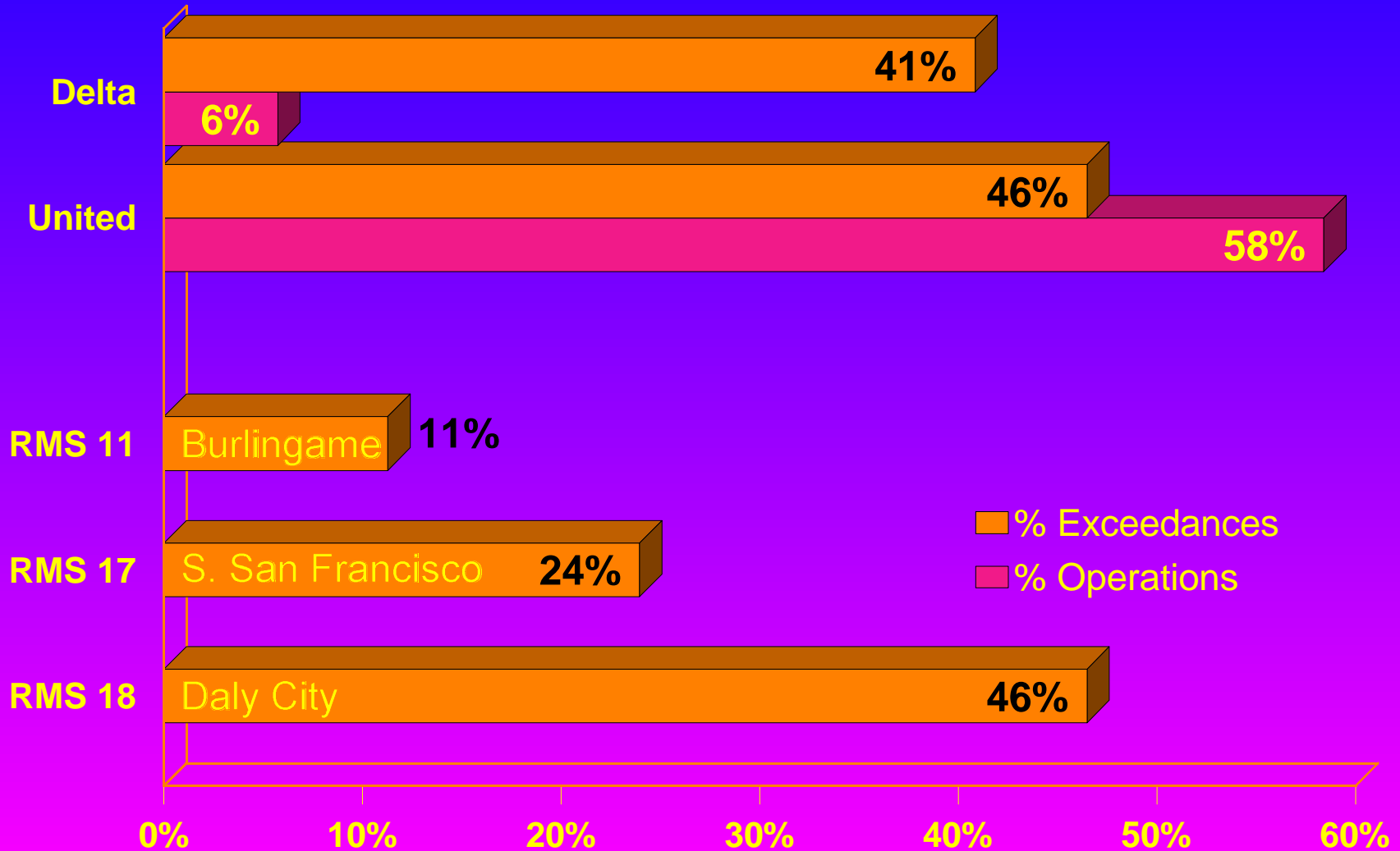


Total Exceedances = 71

February Significant Exceedances By Airline and RMS

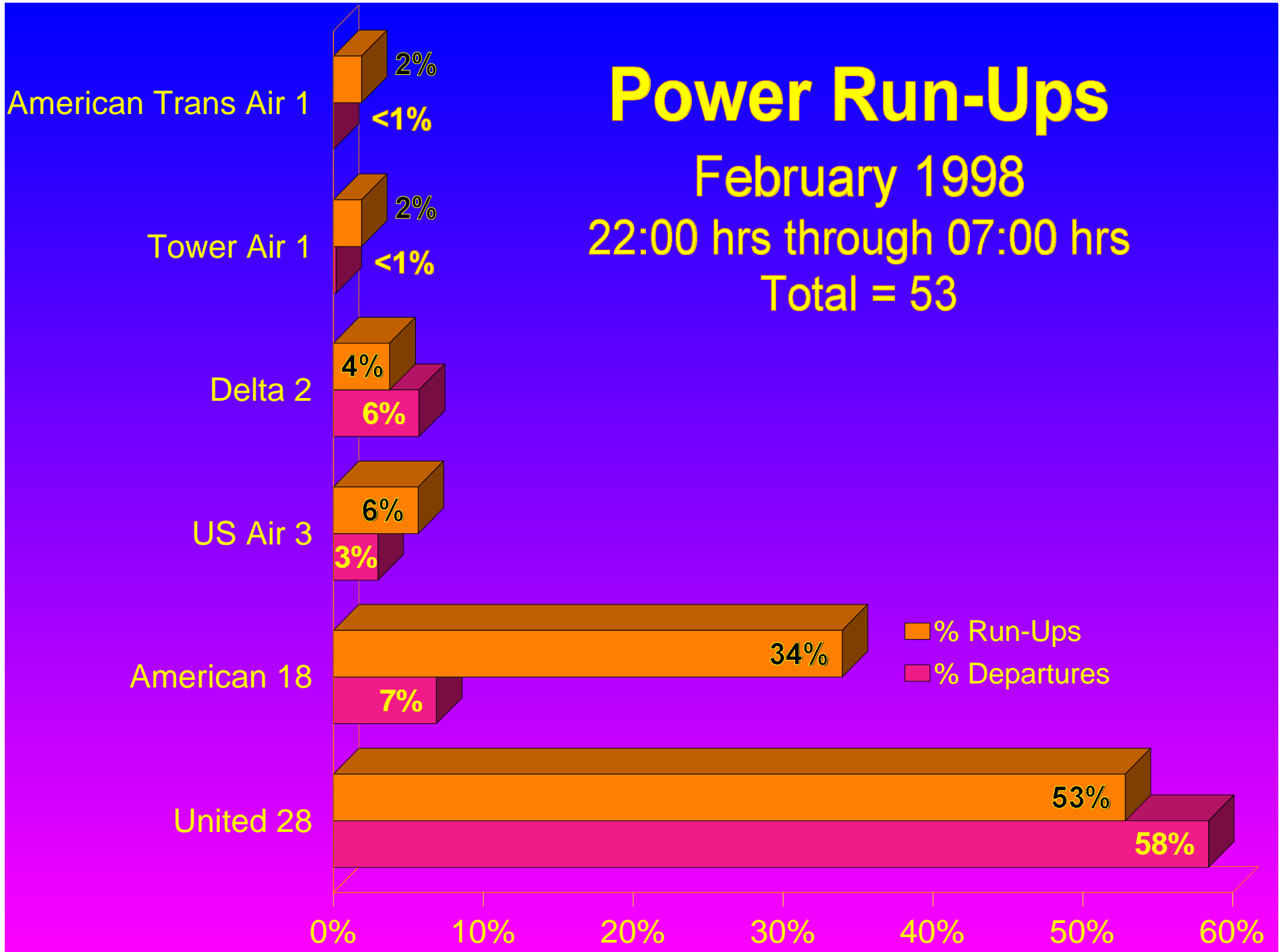


Power Run-Ups

February 1998

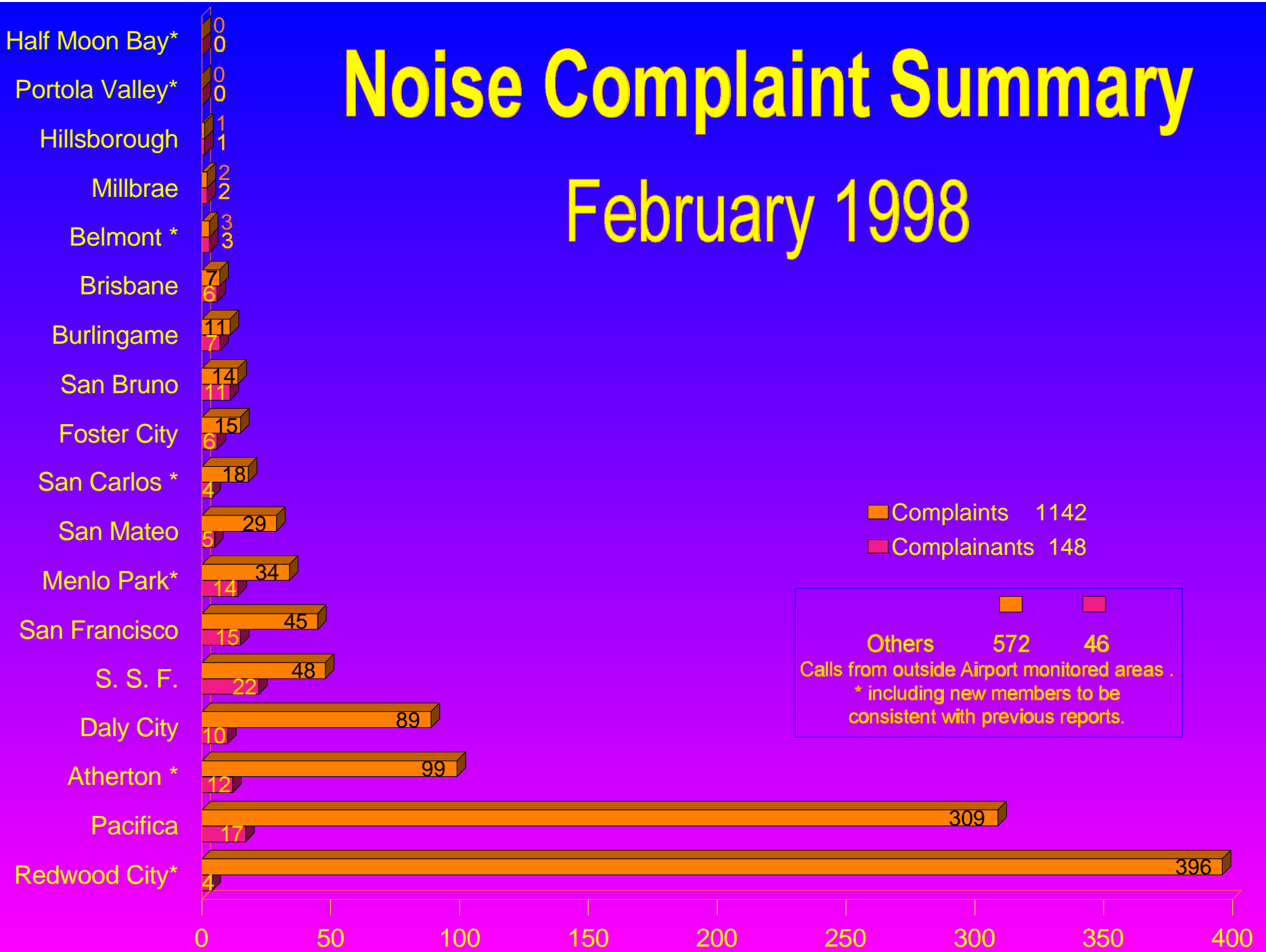
22:00 hrs through 07:00 hrs

Total = 53



Noise Complaint Summary

February 1998



Scheduled Stage 2 Operations

06:00 hrs through 07:00 hrs

February 1998

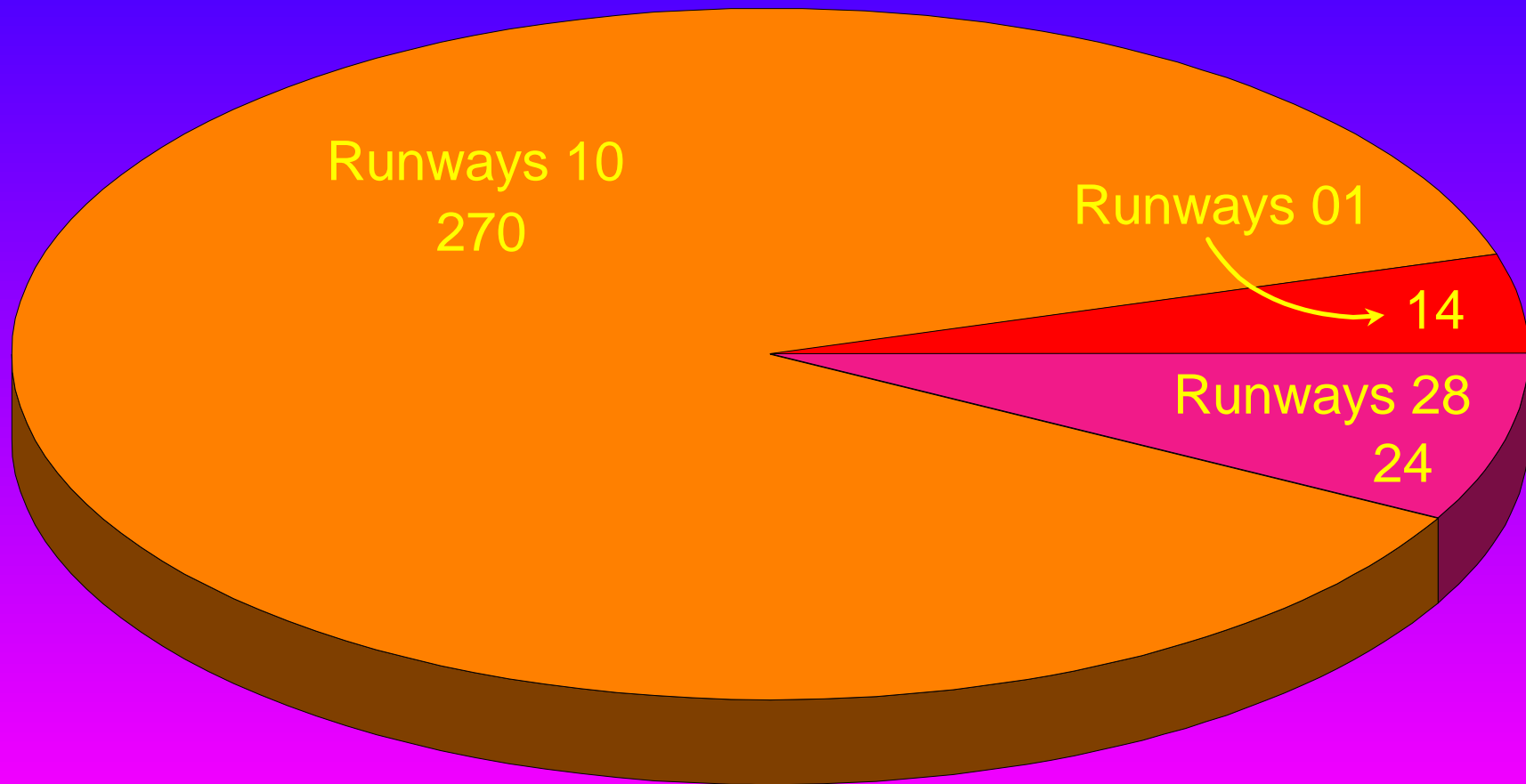
NONE

Preferential Runway 10 Use

February 1998

01:00 hrs through 06:00 hrs

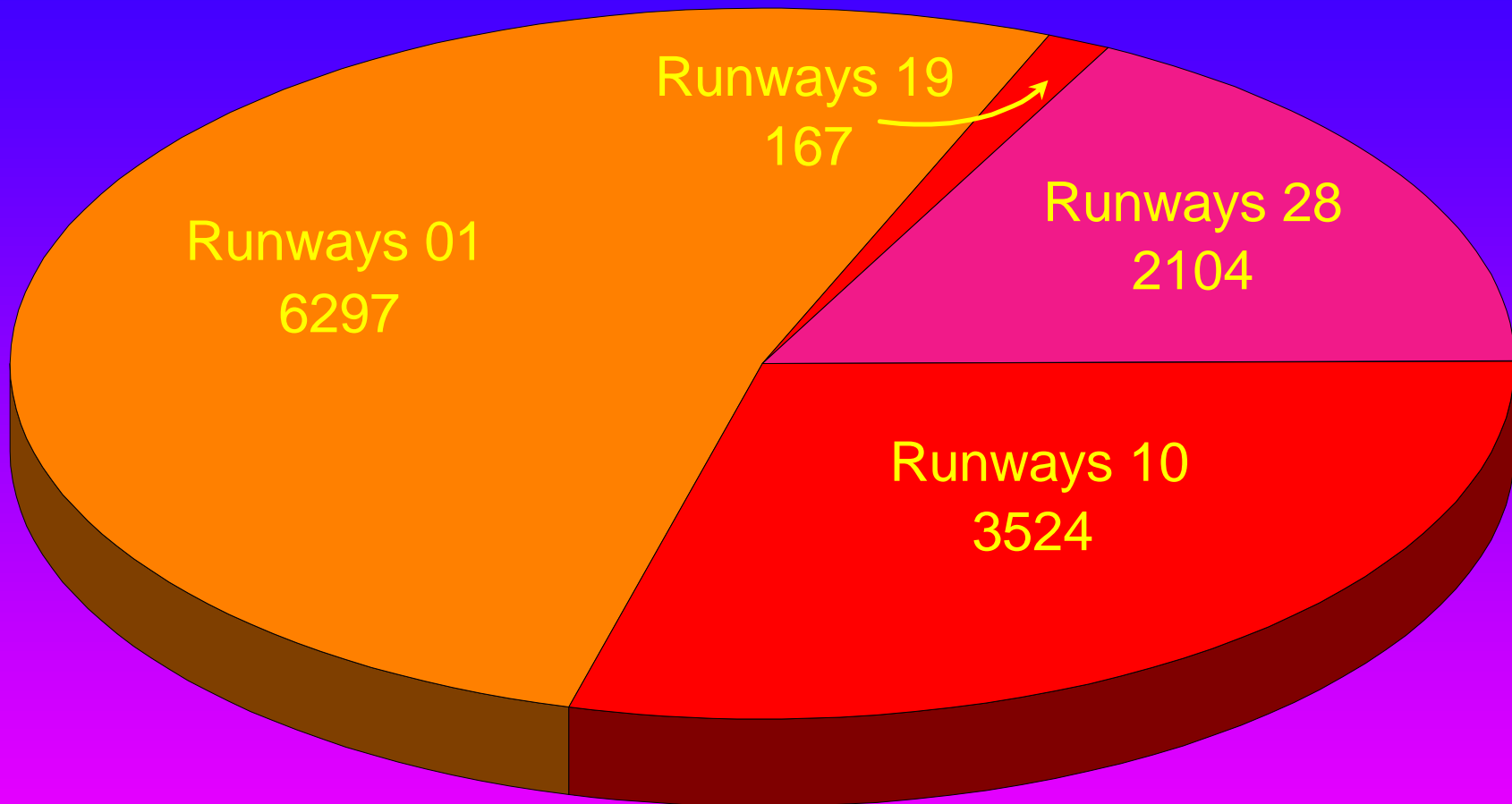
Total 308



Monthly Air Carrier Departures

February 1998

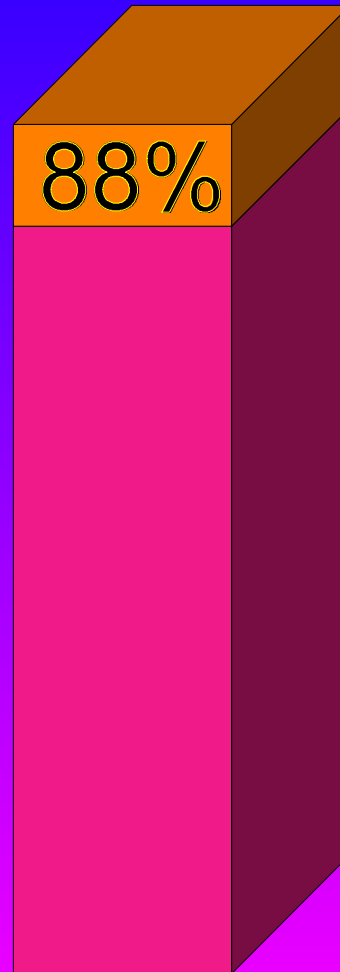
Total Air Carrier Departures 12,092



Total Runways 28 Air Carrier Arrivals 7,896

Stage 3 Operations

Second Quarter 1997



Historical Exceedances February 1998

