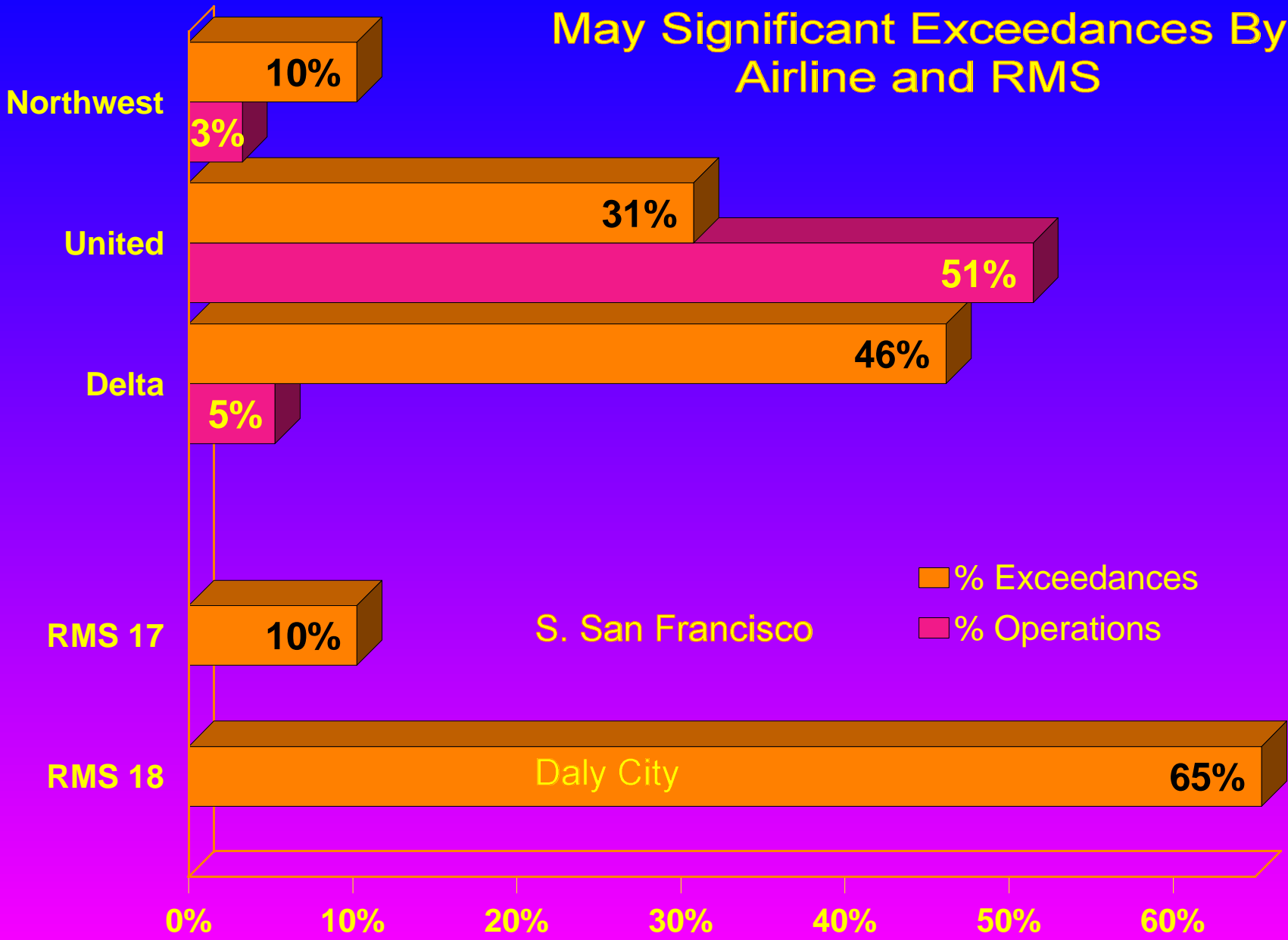


Total Exceedances = 78

May Significant Exceedances By
Airline and RMS

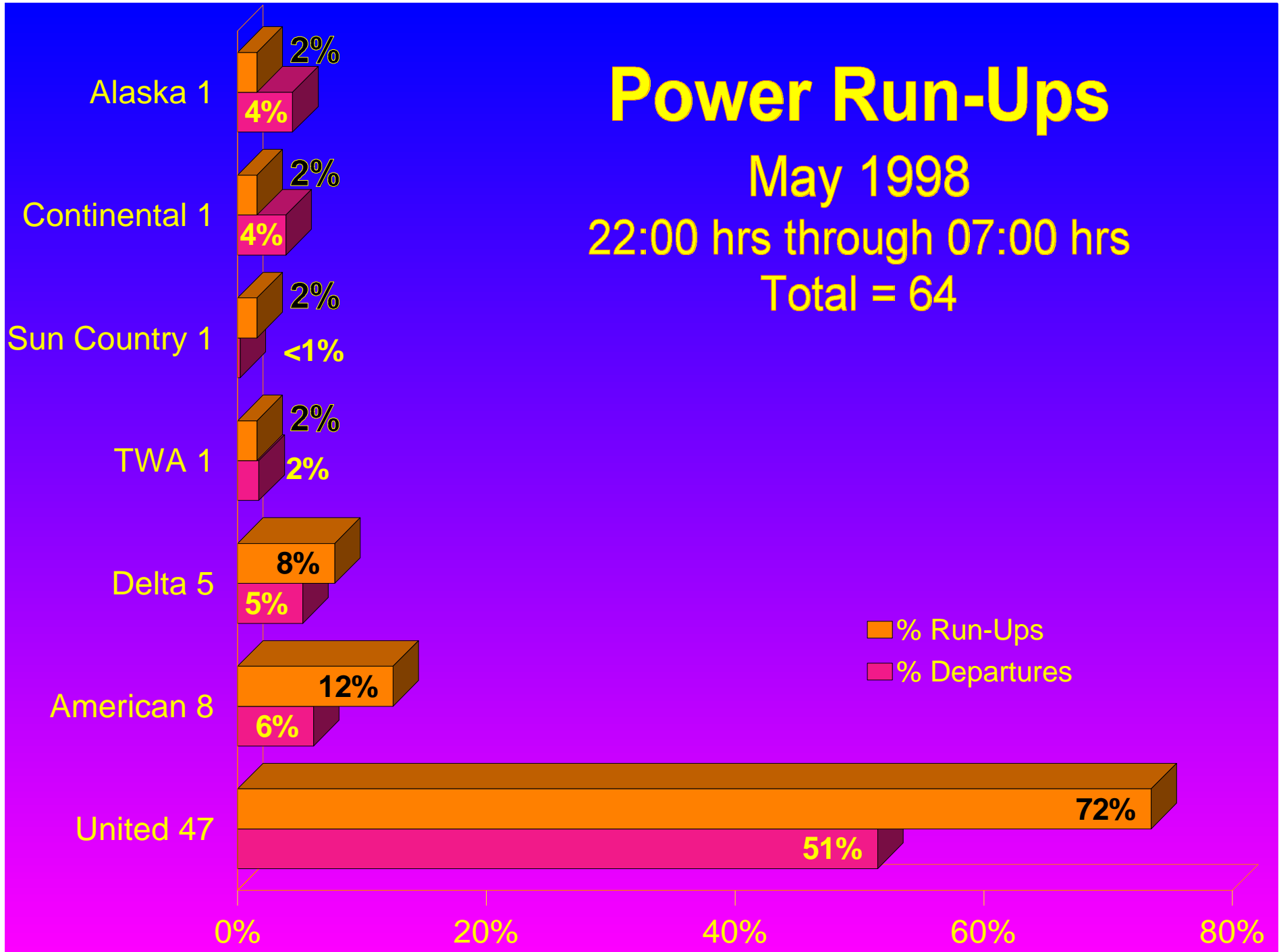


Power Run-Ups

May 1998

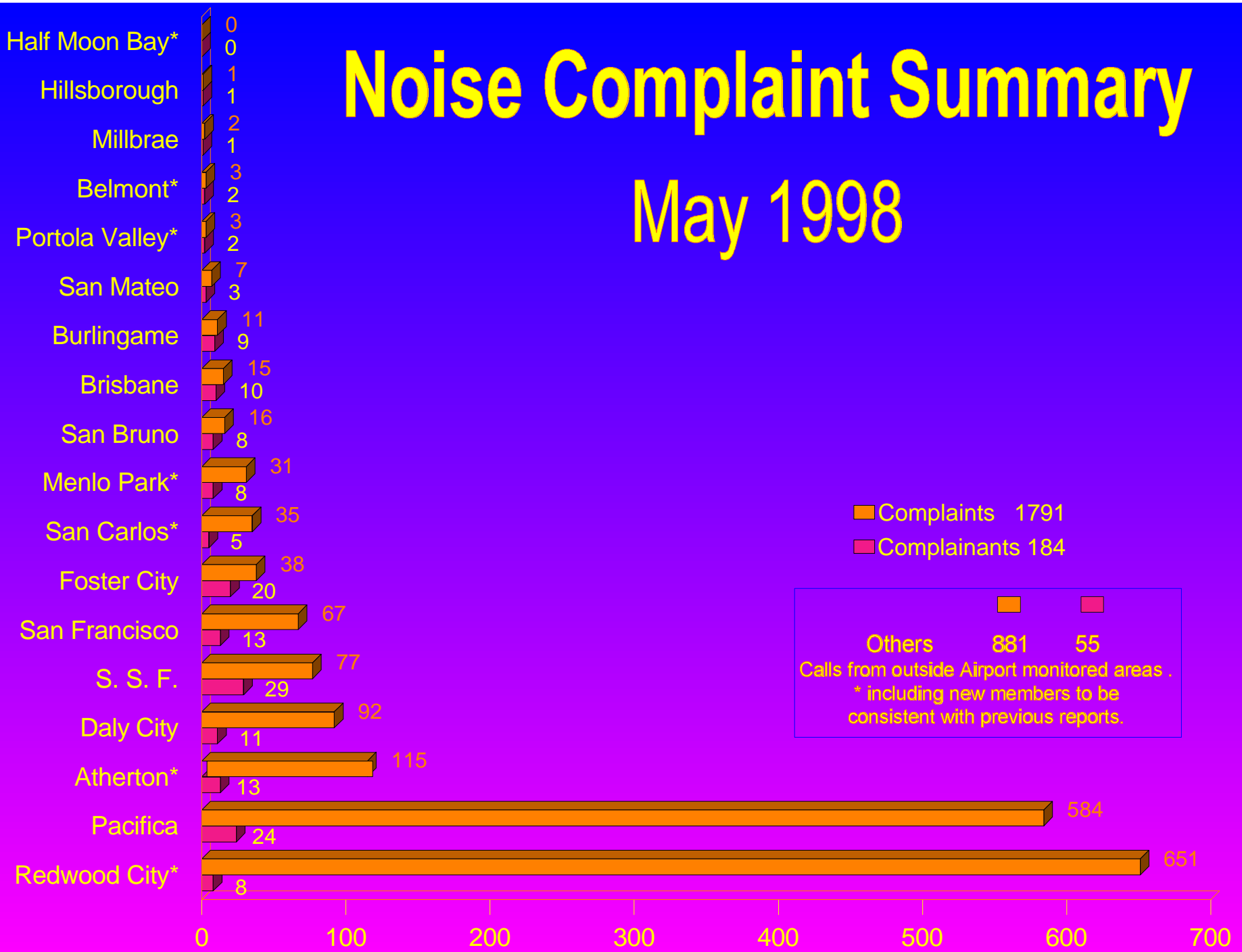
22:00 hrs through 07:00 hrs

Total = 64



Noise Complaint Summary

May 1998



Scheduled Stage 2 Operations

06:00 hrs through 07:00 hrs

May 1998

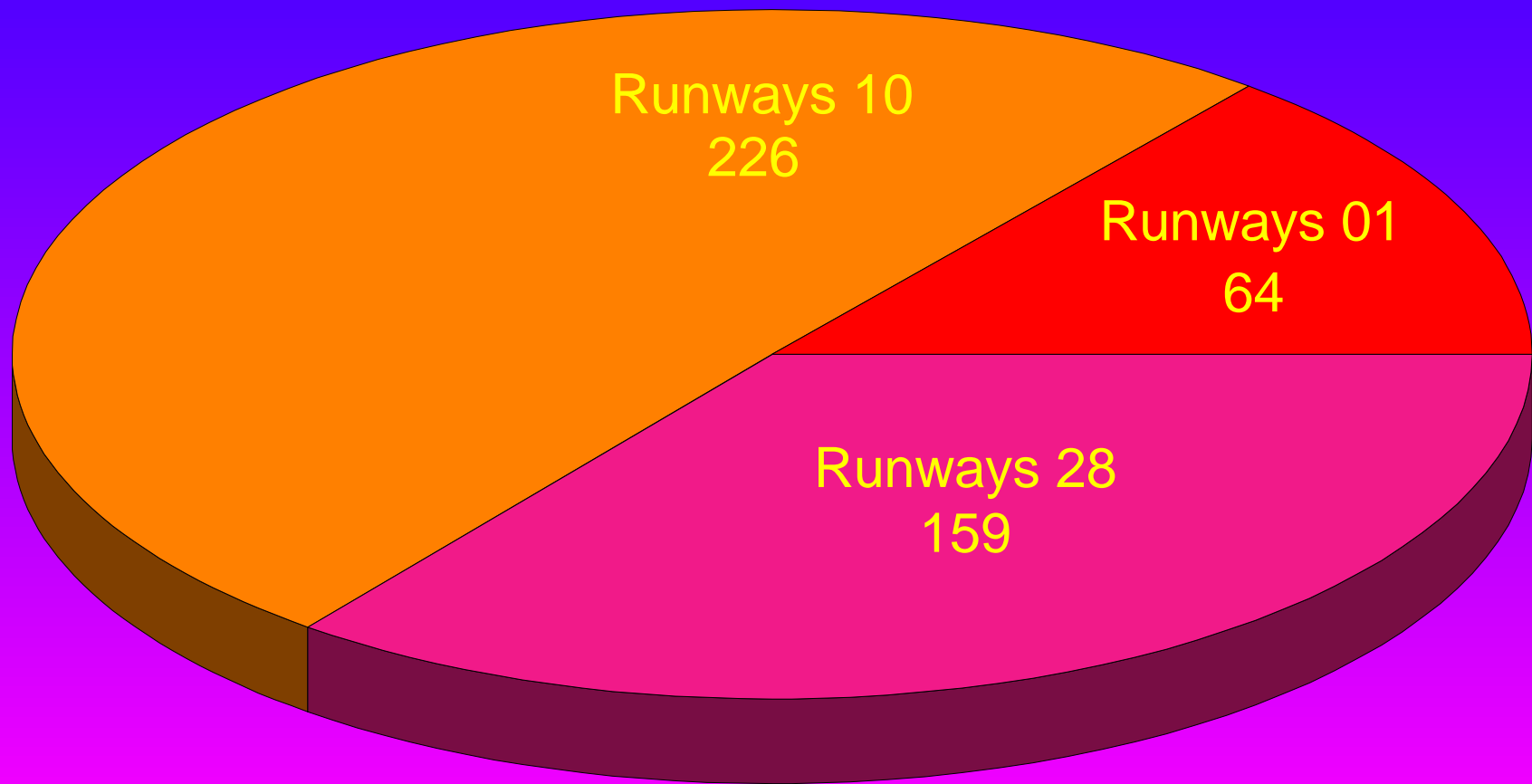
NONE

Preferential Runways 10 Use

May 1998

01:00 hrs through 06:00 hrs

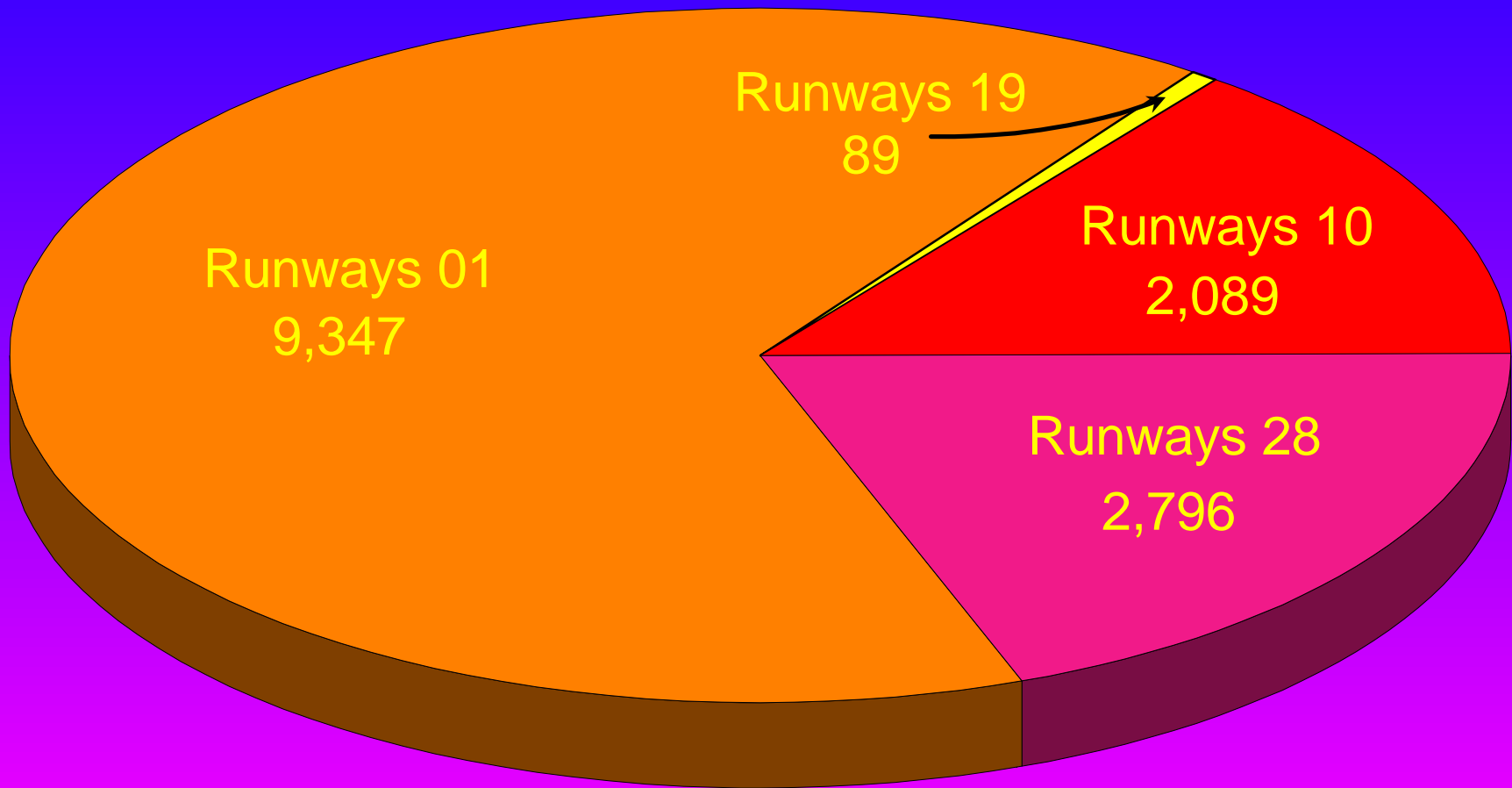
Total 449



Monthly Air Carrier Departures

May 1998

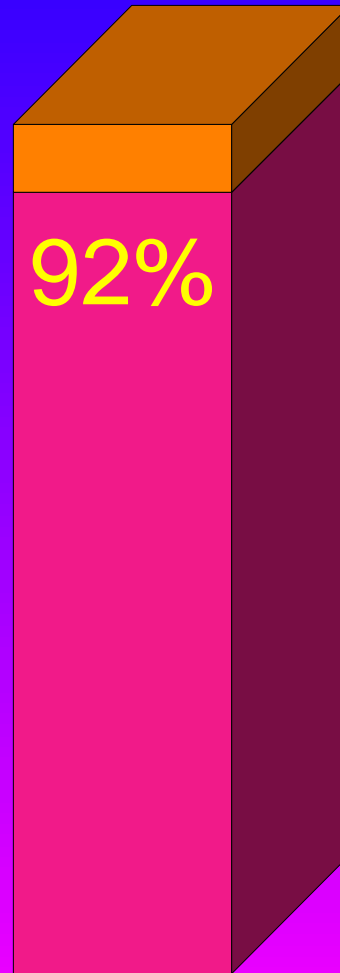
Total Air Carrier Departures 14,321



Total Runways 28 Air Carrier Arrivals 12,300

Stage 3 Operations

Fourth Quarter 1997



Historical Exceedances

May 1998

