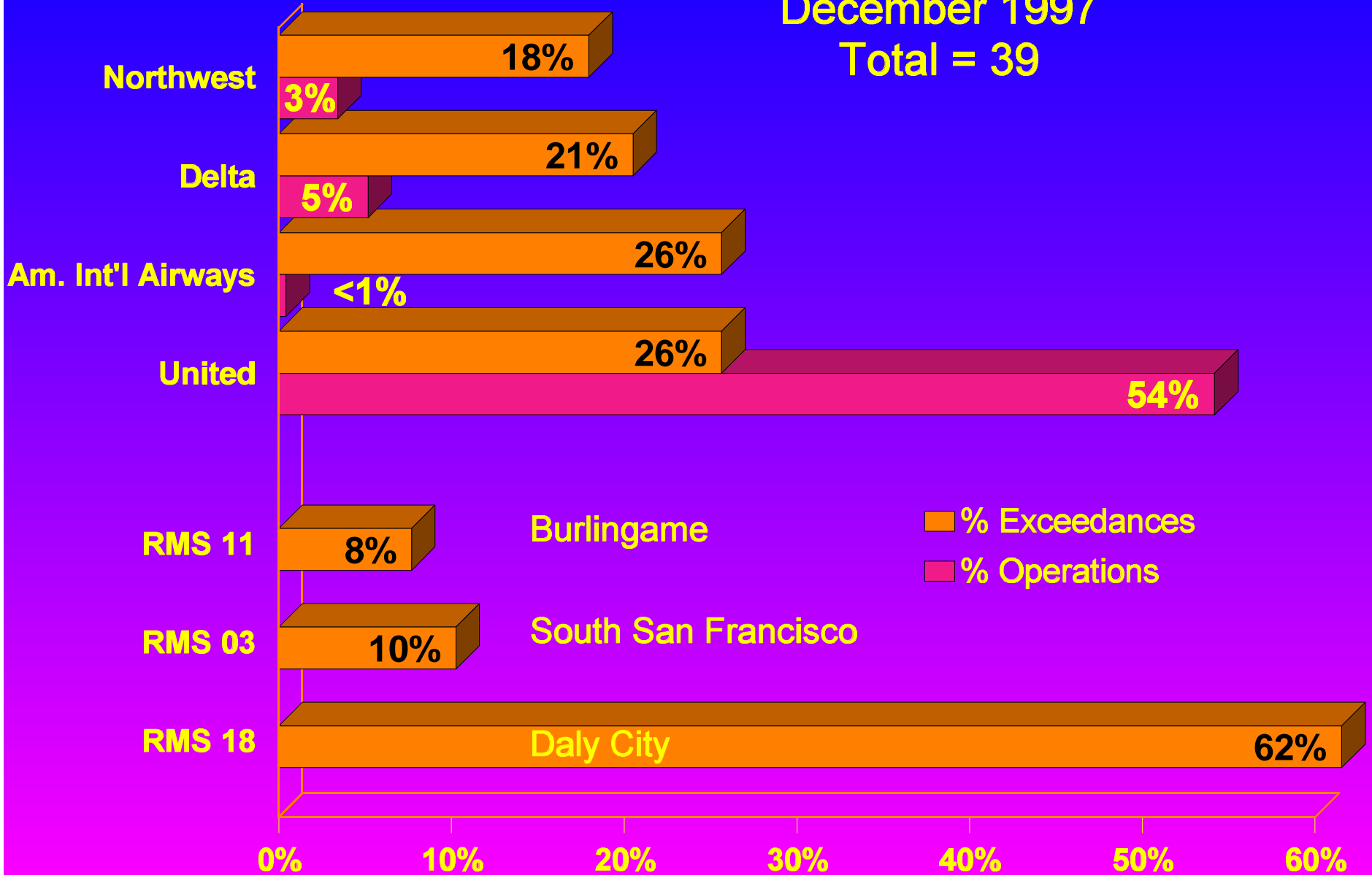


# Significant Exceedances

December 1997  
Total = 39

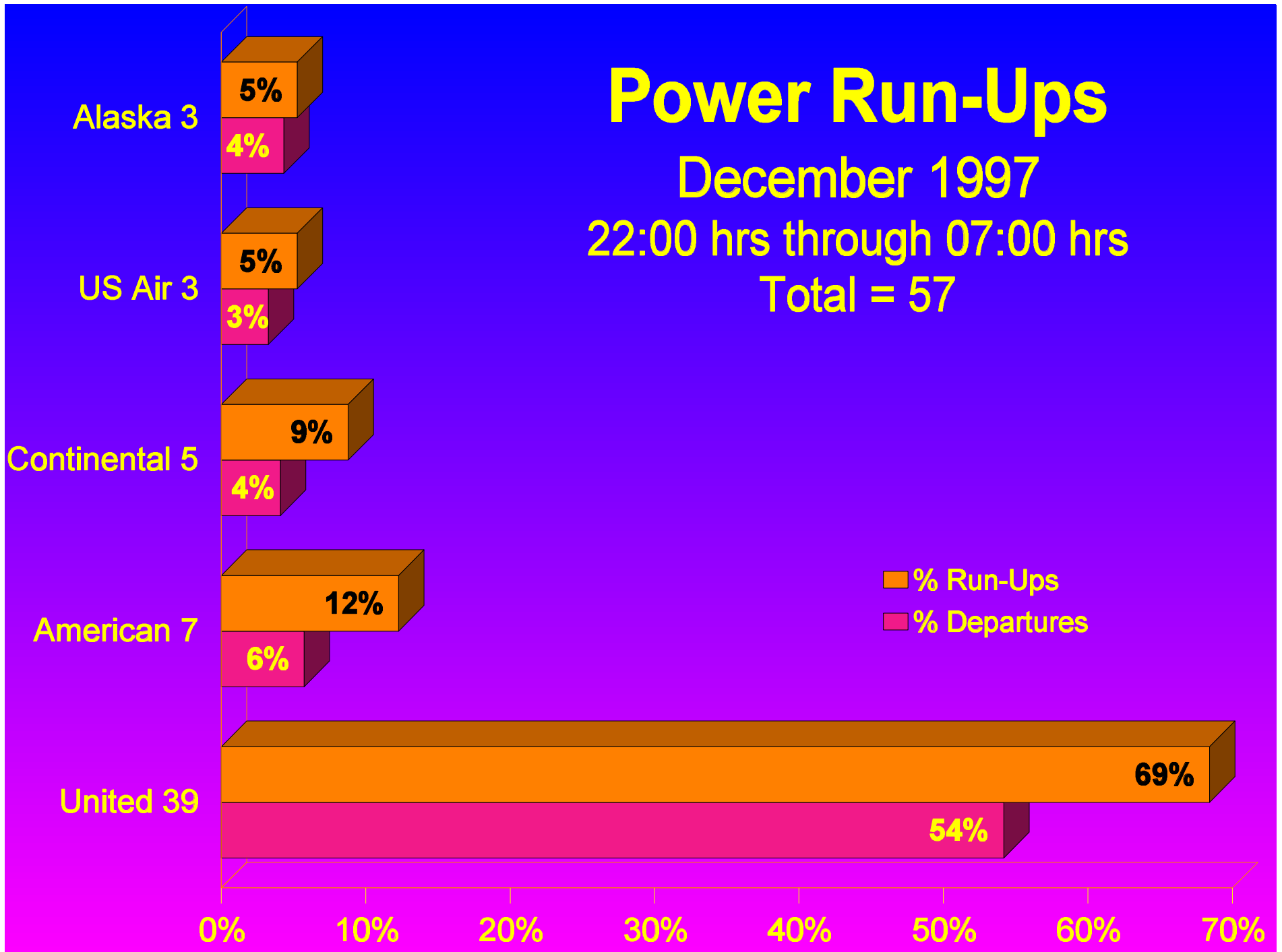


# Power Run-Ups

December 1997

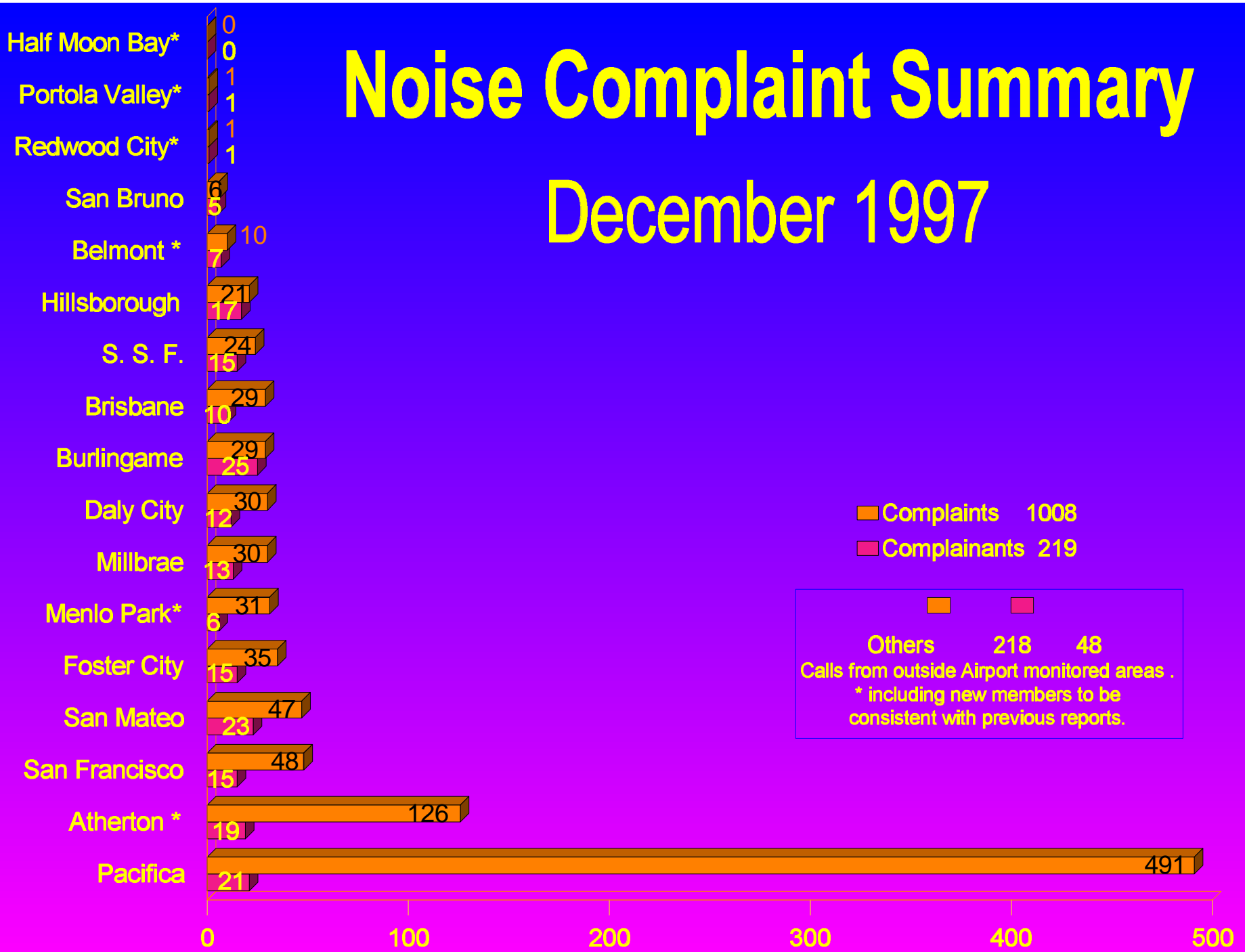
22:00 hrs through 07:00 hrs

Total = 57



# Noise Complaint Summary

## December 1997



# **Scheduled Stage 2 Operations**

06:00 hrs through 07:00 hrs

December 1997

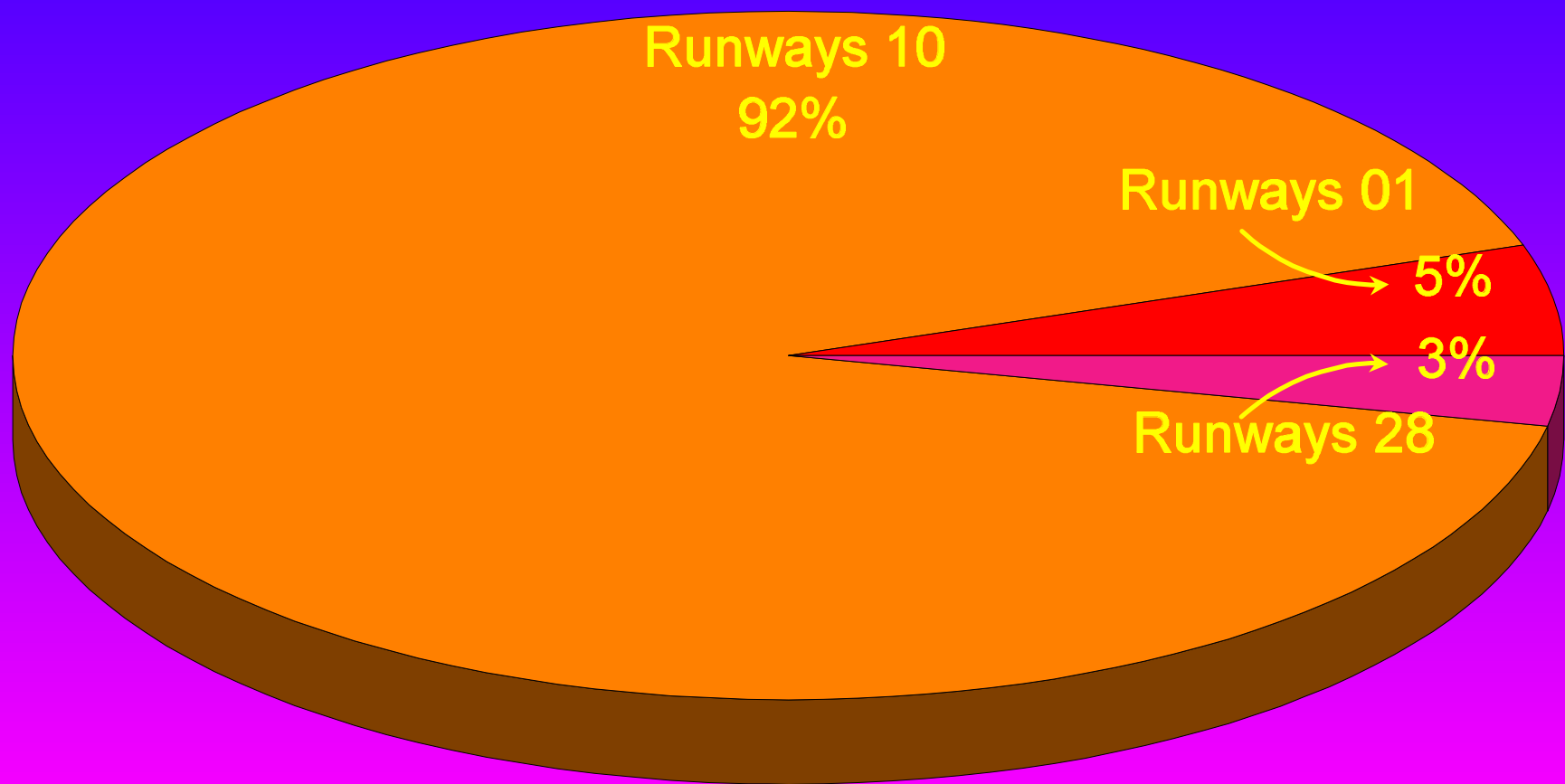
**NONE**

# Preferential Runway 10 Use

December 1997

01:00 hrs through 06:00 hrs

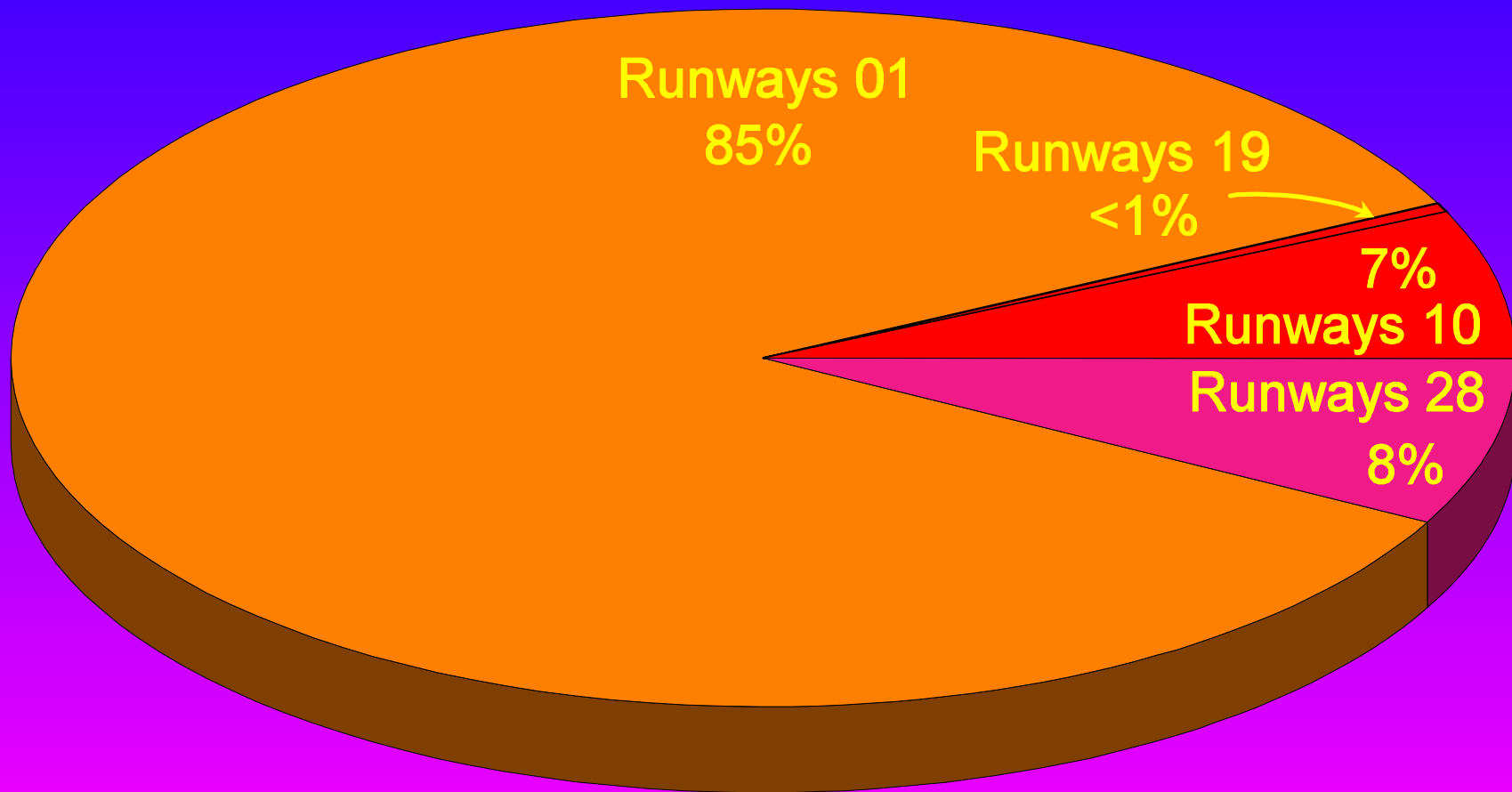
Total 314



# Monthly Air Carrier Departures

December 1997

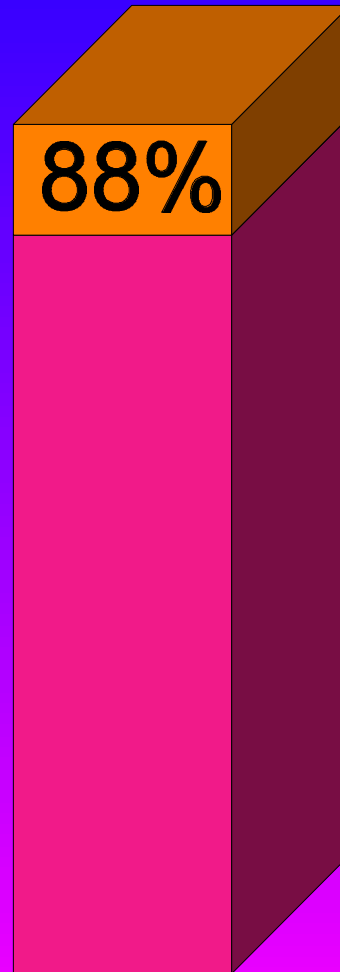
Total Air Carrier Departures 14,136



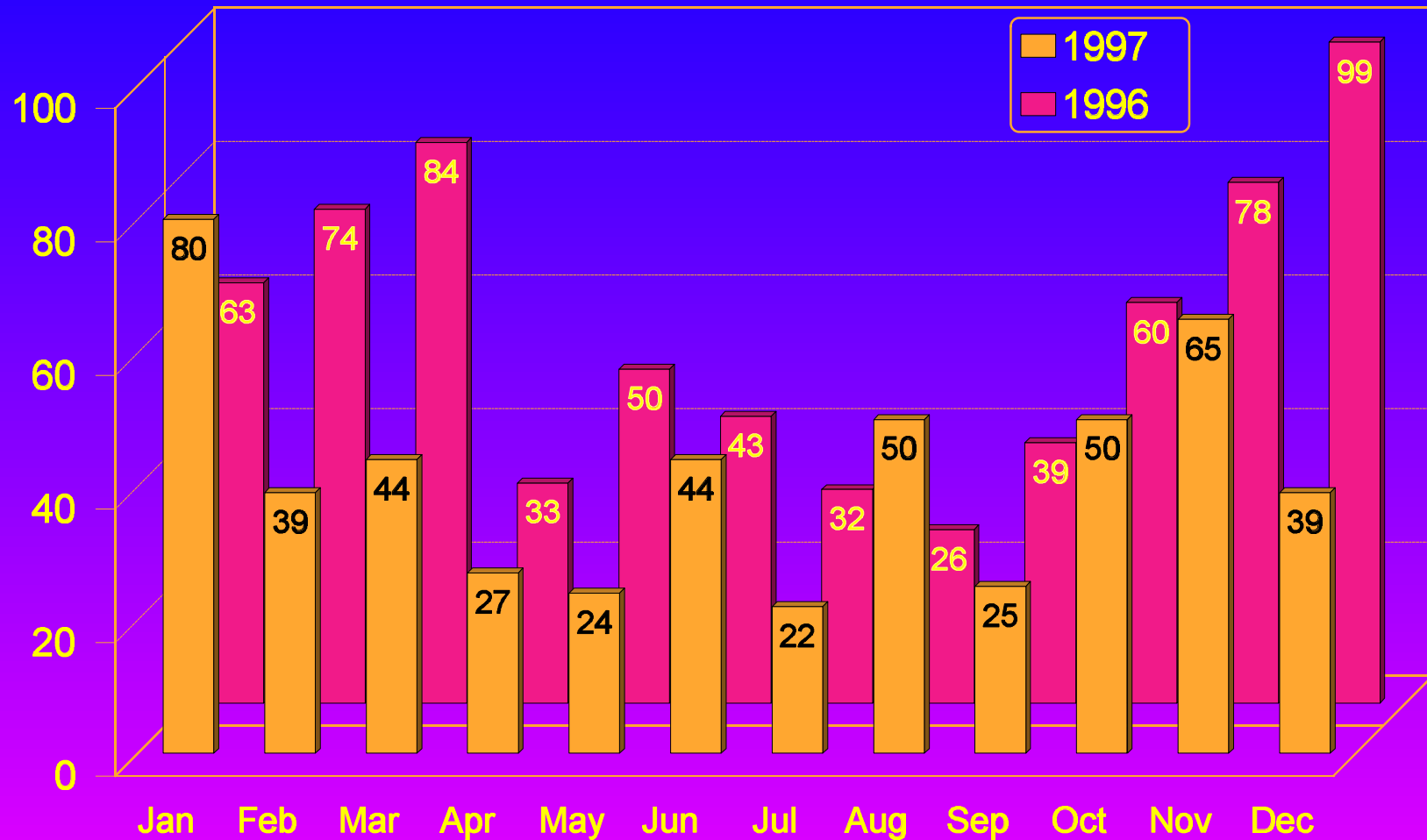
Total Runway 28 Air Carrier Arrivals 13,082

# Stage 3 Operations

Fourth Quarter 1996



# Significant Exceedances Total per Month



For December 1997

26% by United and 26% by American Int'l Airways

62% at RMS 18 in Daly City