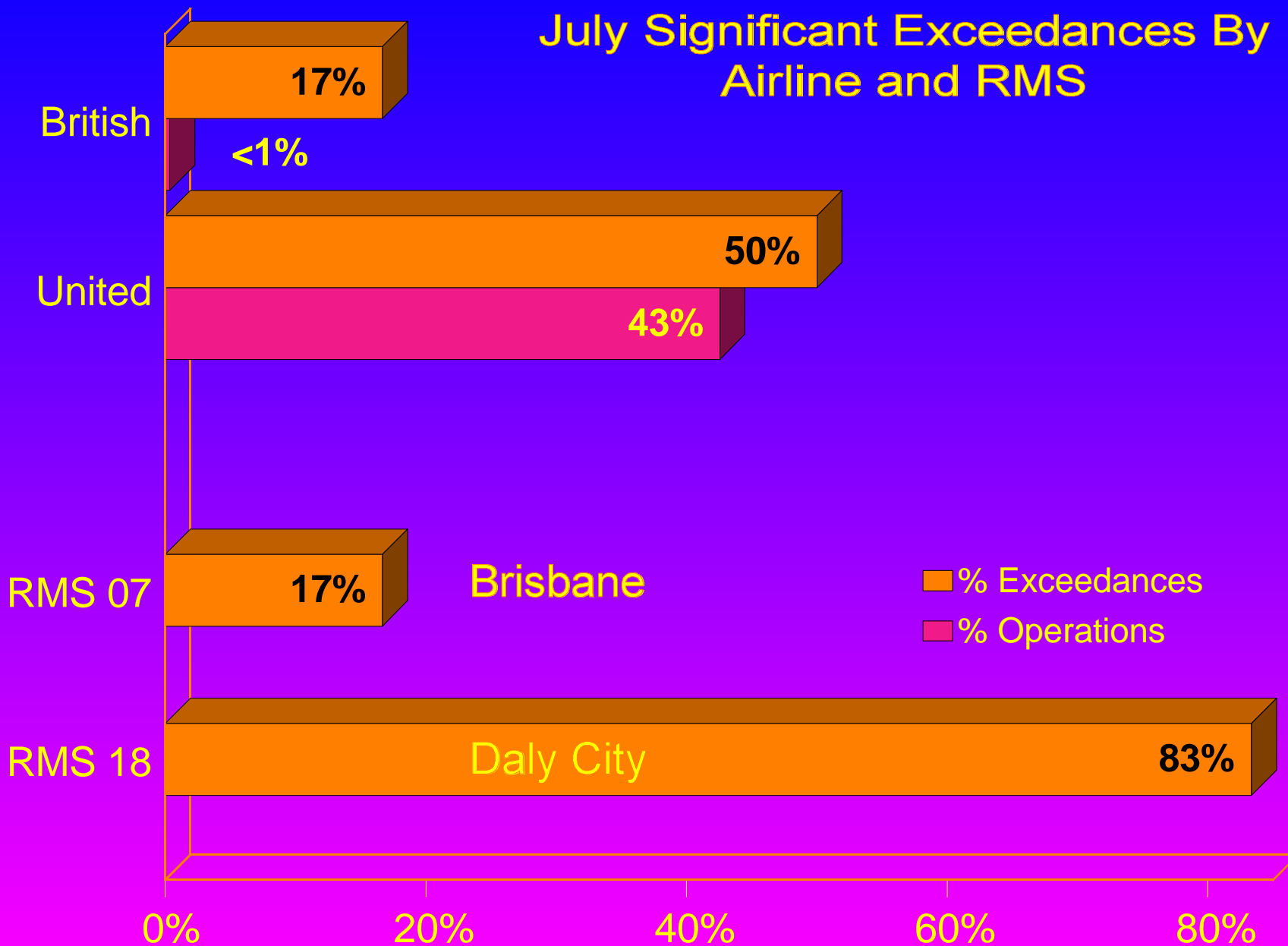


Total Exceedances = 12

July Significant Exceedances By Airline and RMS

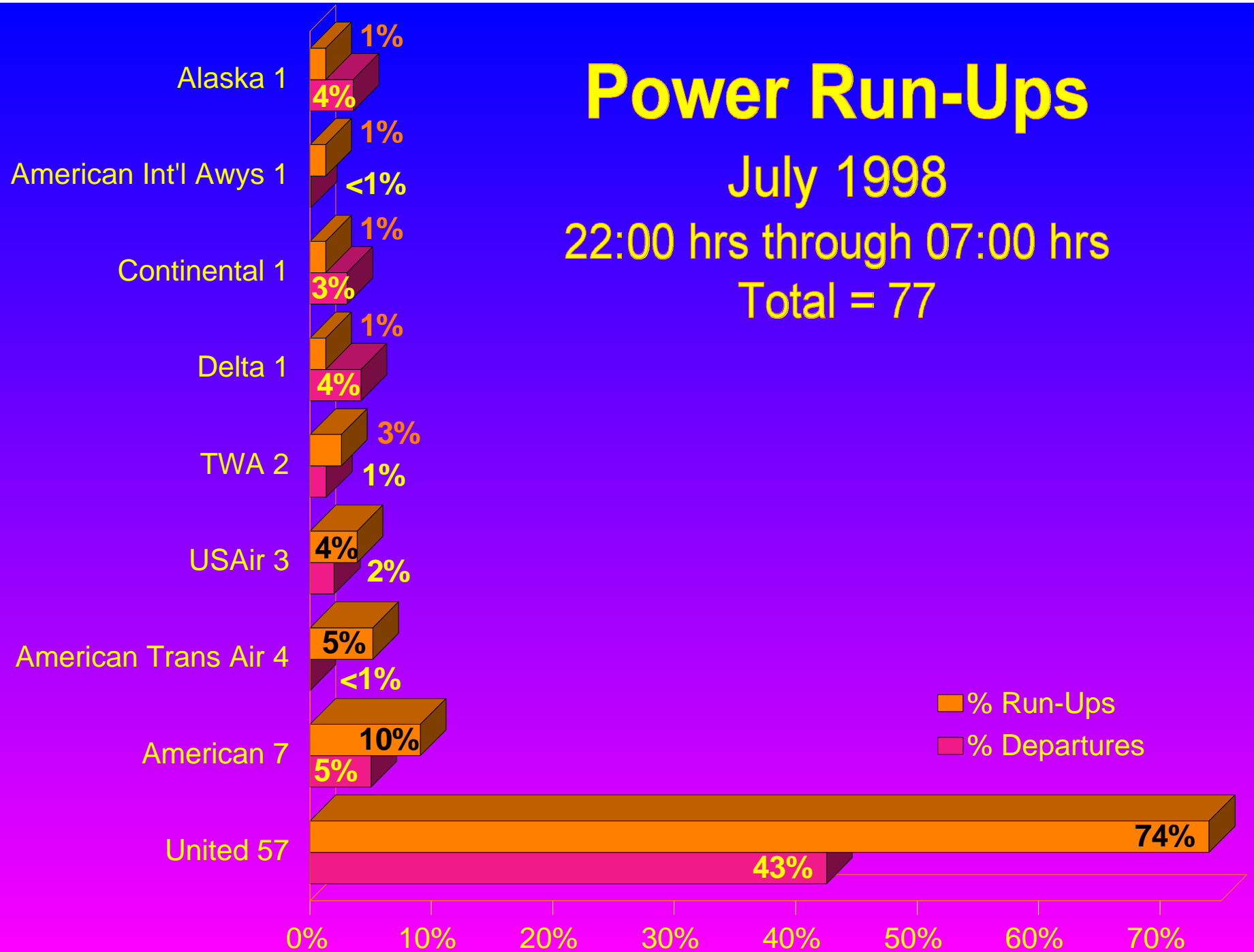


Power Run-Ups

July 1998

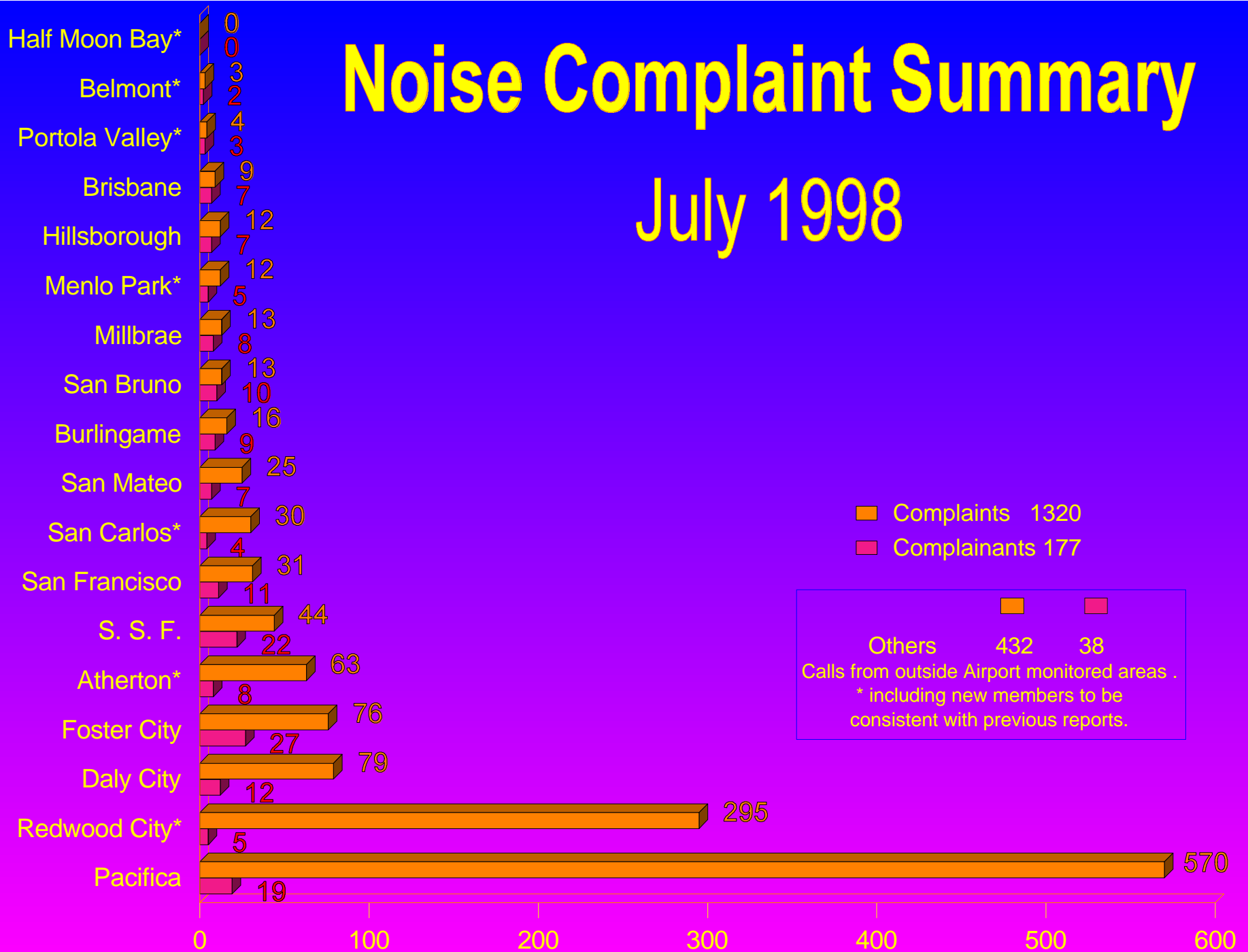
22:00 hrs through 07:00 hrs

Total = 77



Noise Complaint Summary

July 1998



Scheduled Stage 2 Operations

06:00 hrs through 07:00 hrs

July 1998

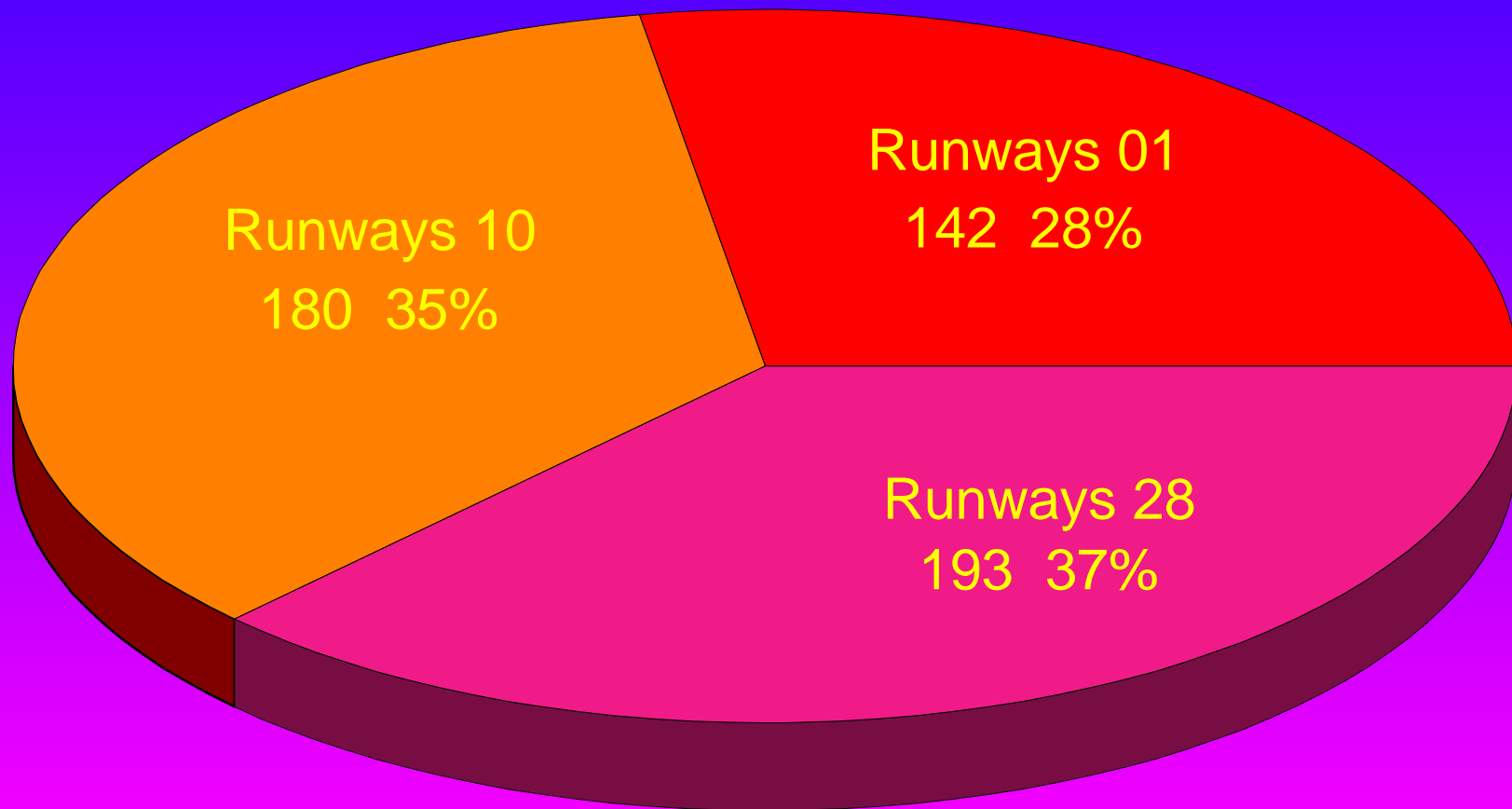
NONE

Preferential Runways 10 Use

July 1998

01:00 hrs through 06:00 hrs

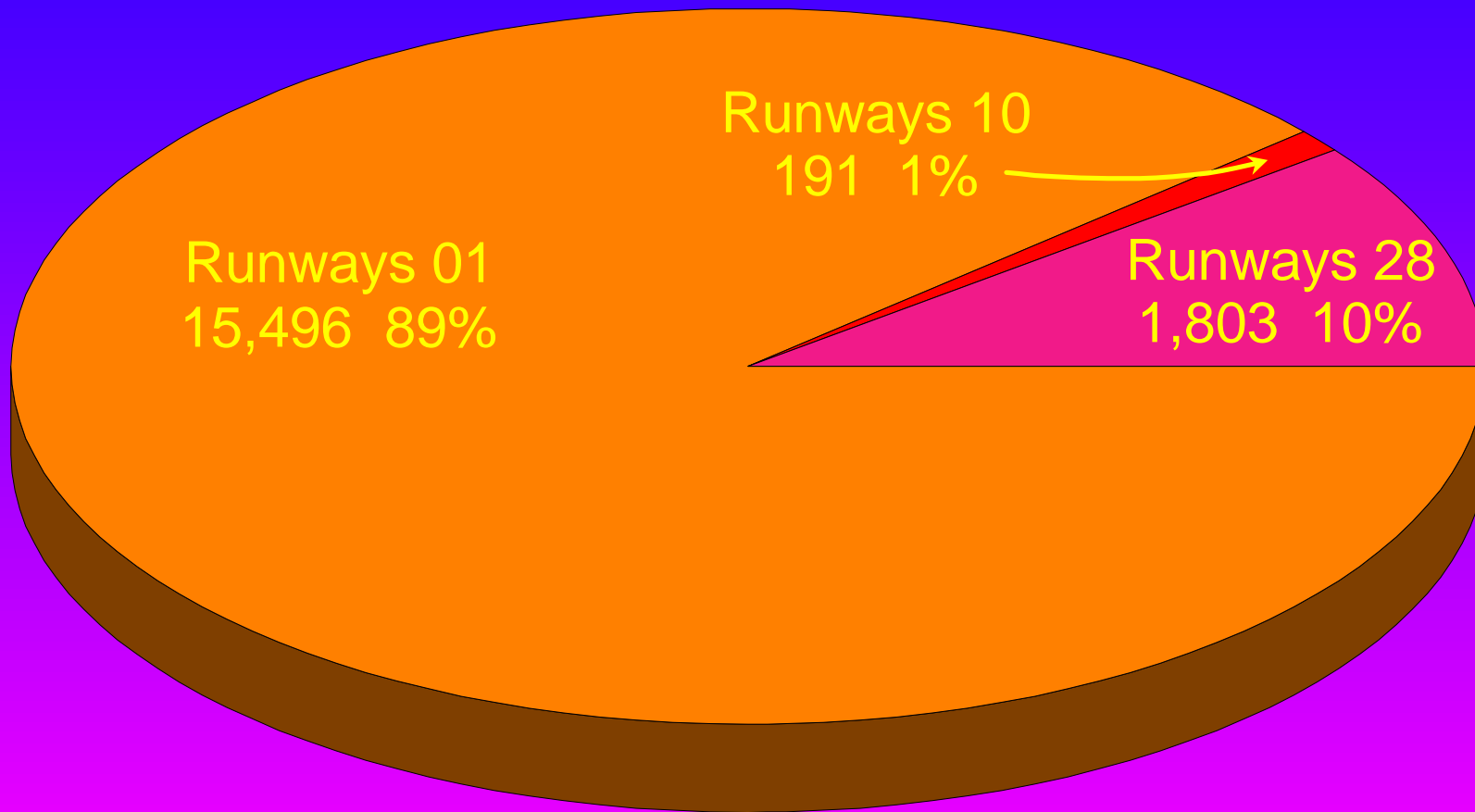
Total 515



Monthly Air Carrier Departures

July 1998

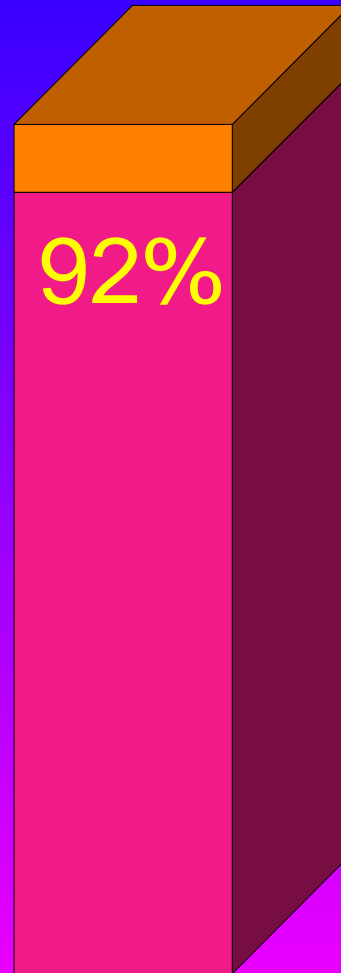
Total Air Carrier Departures 17,490



Total Runways 28 Air Carrier Arrivals 13,268

Stage 3 Operations

First Quarter 1998



Historical Exceedances

July 1998

