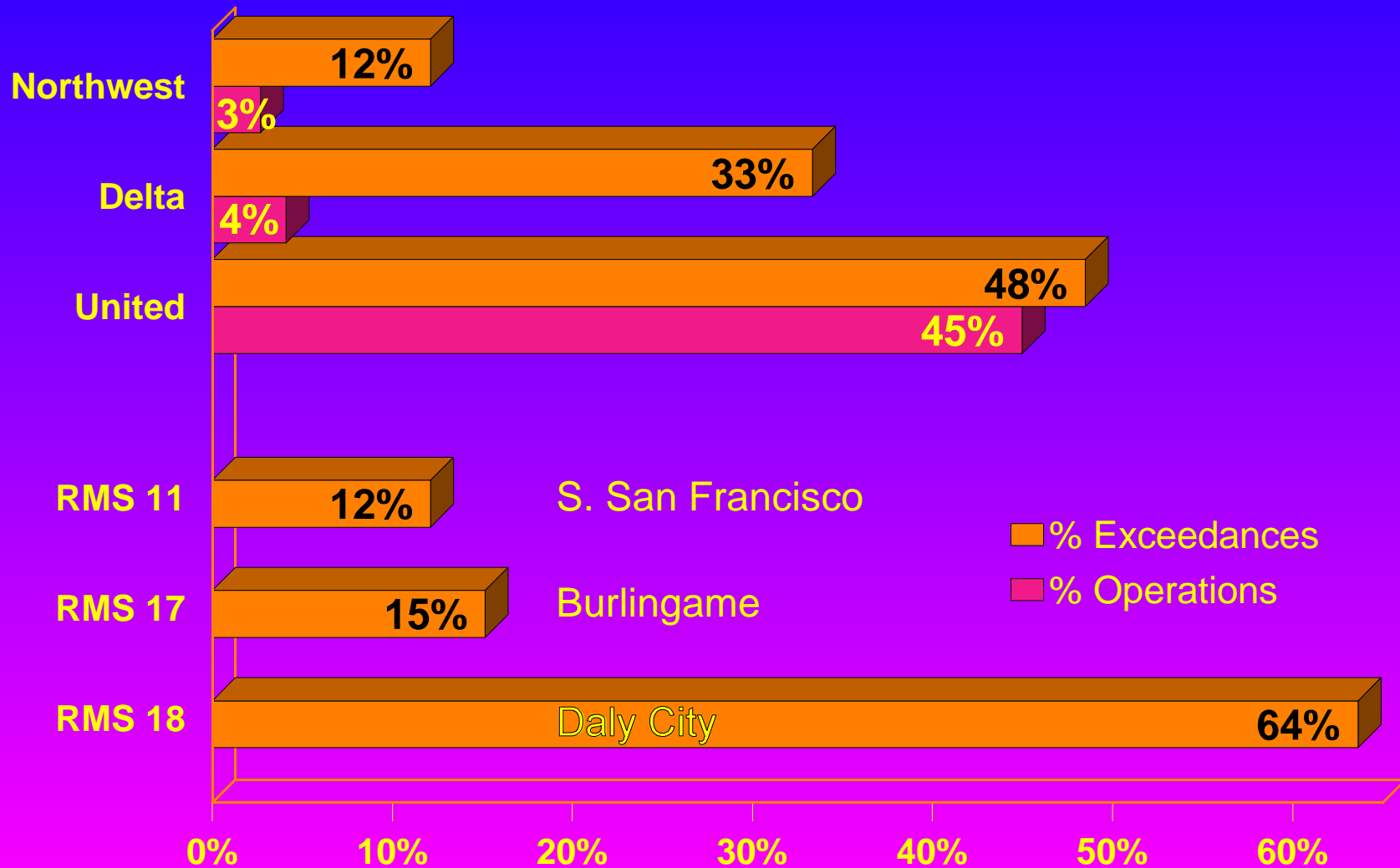


Total Exceedances = 33

March Significant Exceedances By Airline and RMS

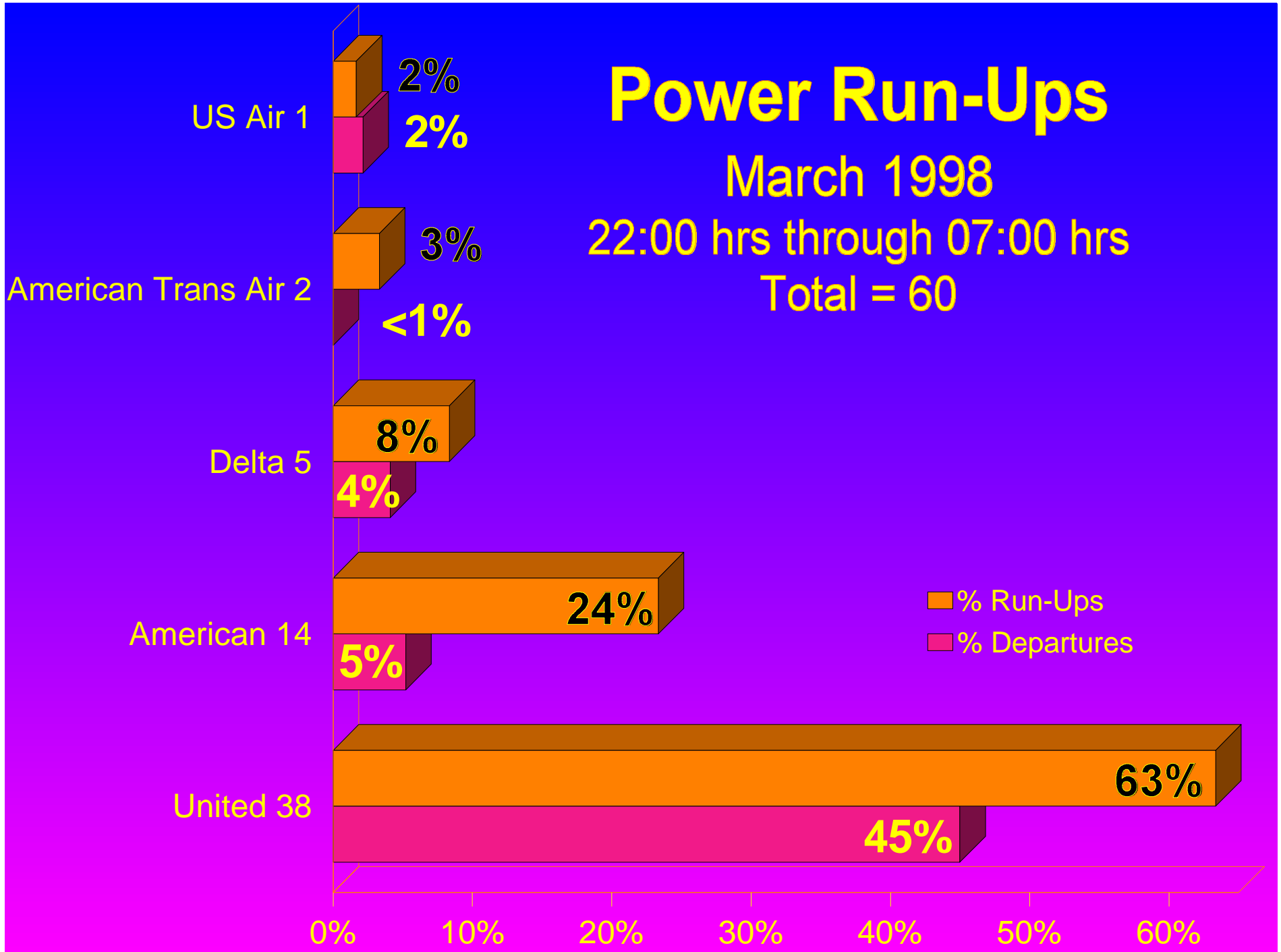


Power Run-Ups

March 1998

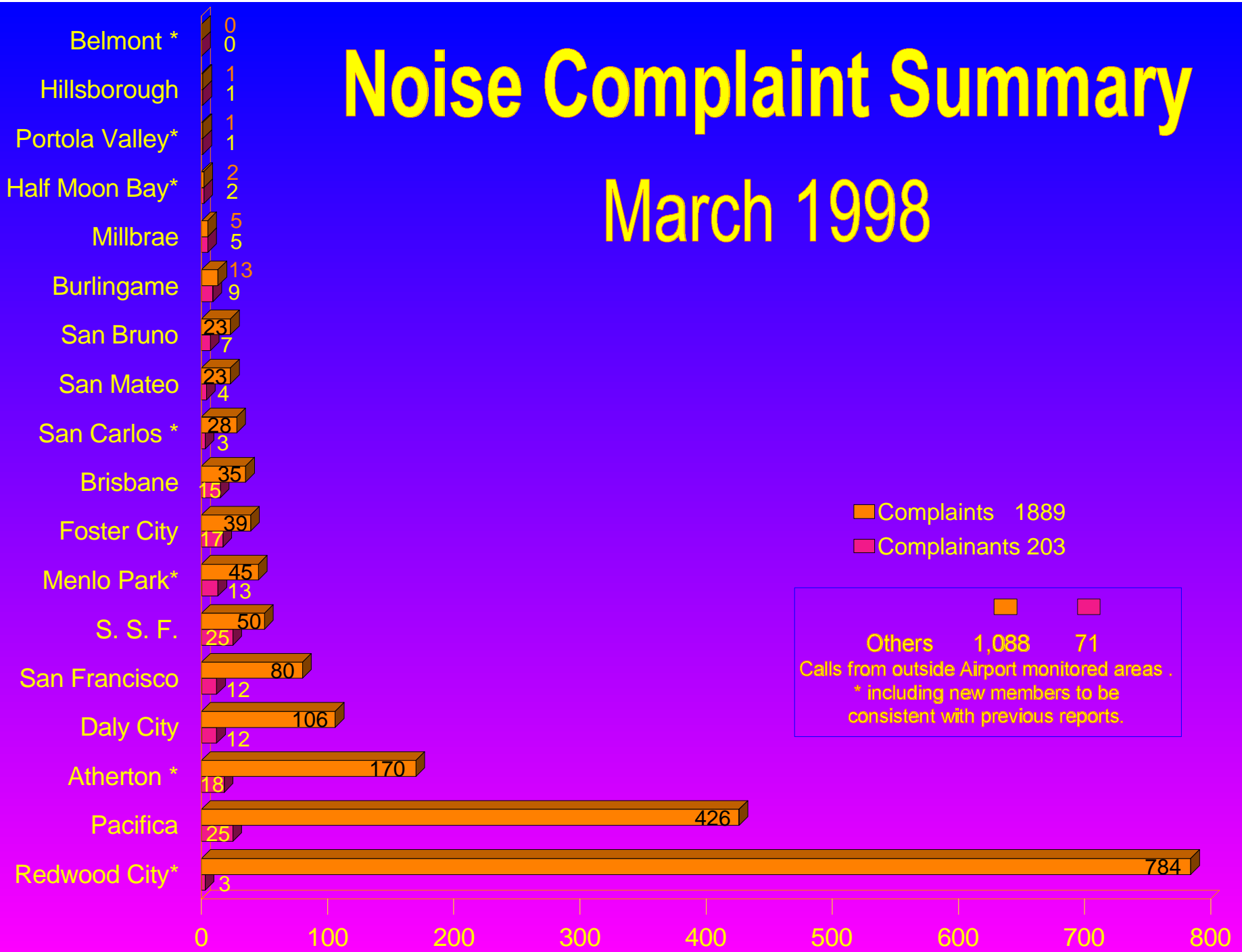
22:00 hrs through 07:00 hrs

Total = 60



Noise Complaint Summary

March 1998

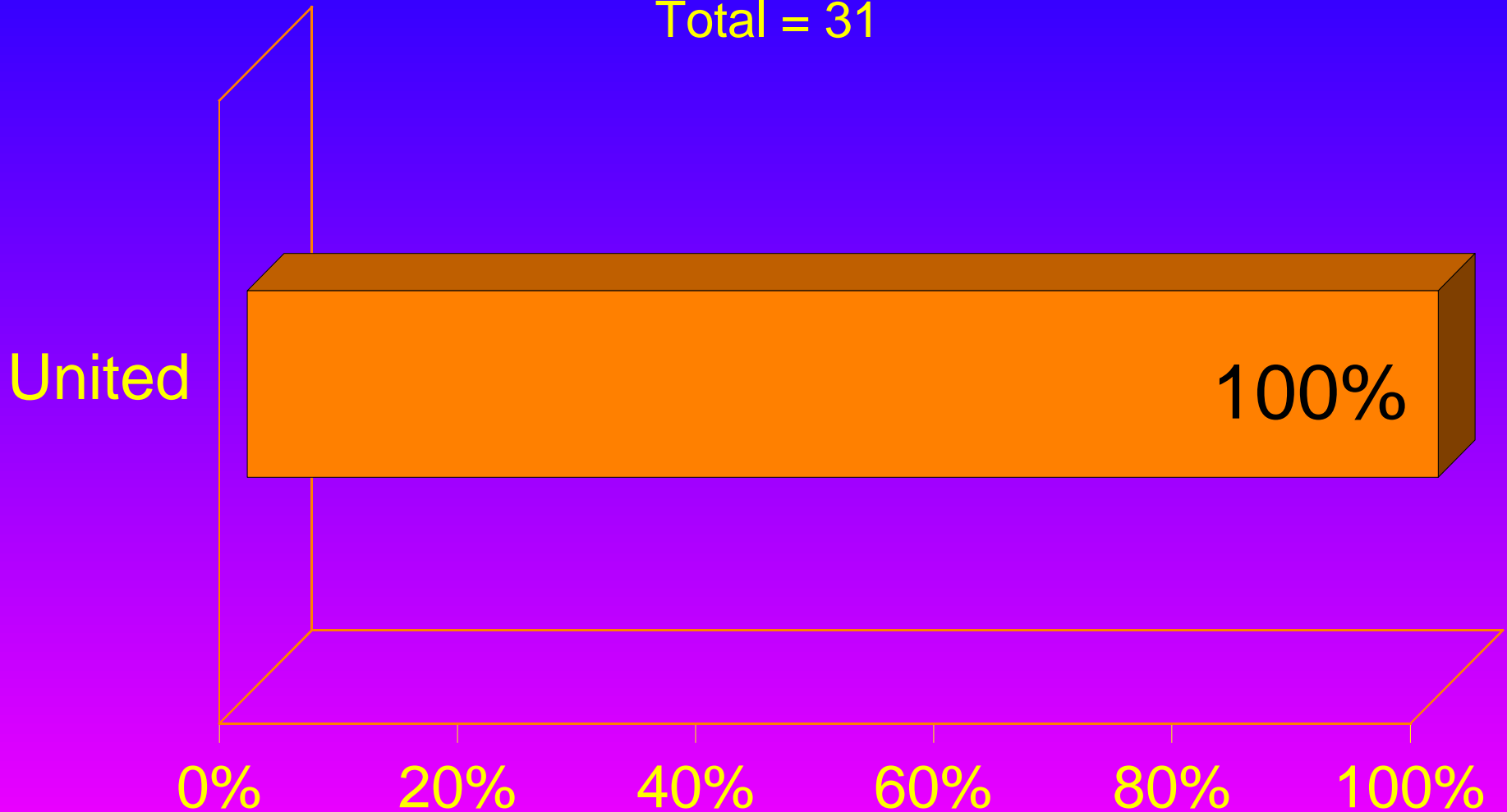


Scheduled Stage 2 Operations

06:00 hrs through 07:00 hrs

March 1998

Total = 31

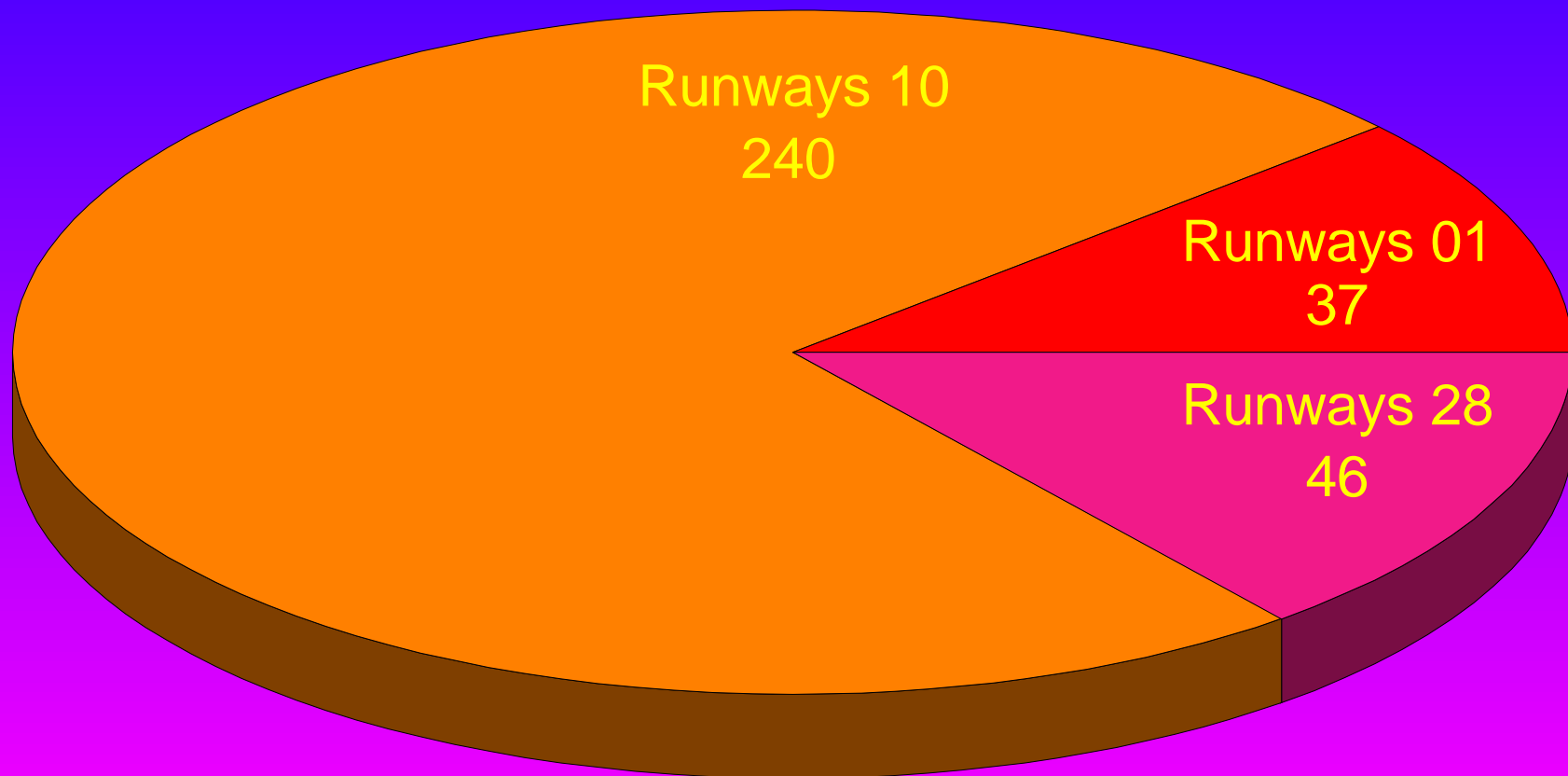


Preferential Runway 10 Use

March 1998

01:00 hrs through 06:00 hrs

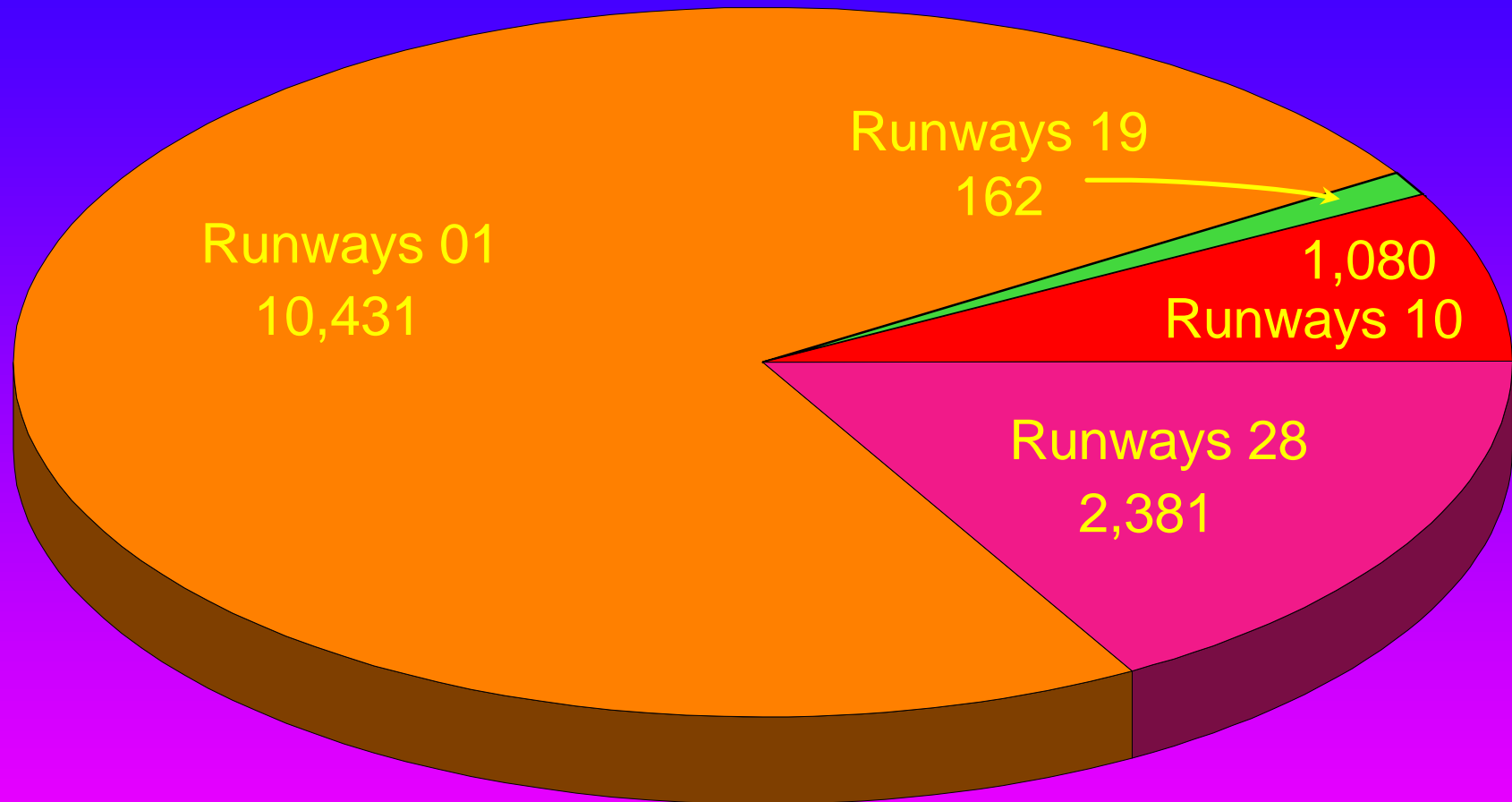
Total 323



Monthly Air Carrier Departures

March 1998

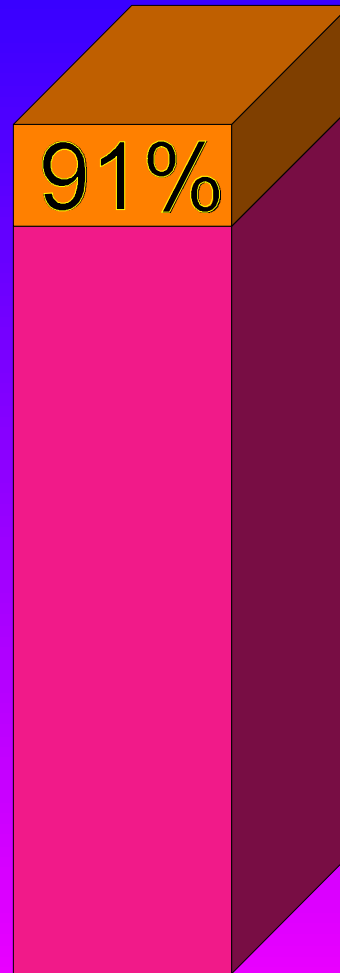
Total Air Carrier Departures 14,054



Total Runways 28 Air Carrier Arrivals 12,958

Stage 3 Operations

Third Quarter 1997



Historical Exceedances

March 1998

