

64-37

ALL  
CD

1" = 600'

BK-64  
pg. 39

BK.65  
pg. 21

22.2  
22.3  
—SEE INSERT

*[Handwritten scribble]*

BK-67  
pg. 30

TAX CODE AREA

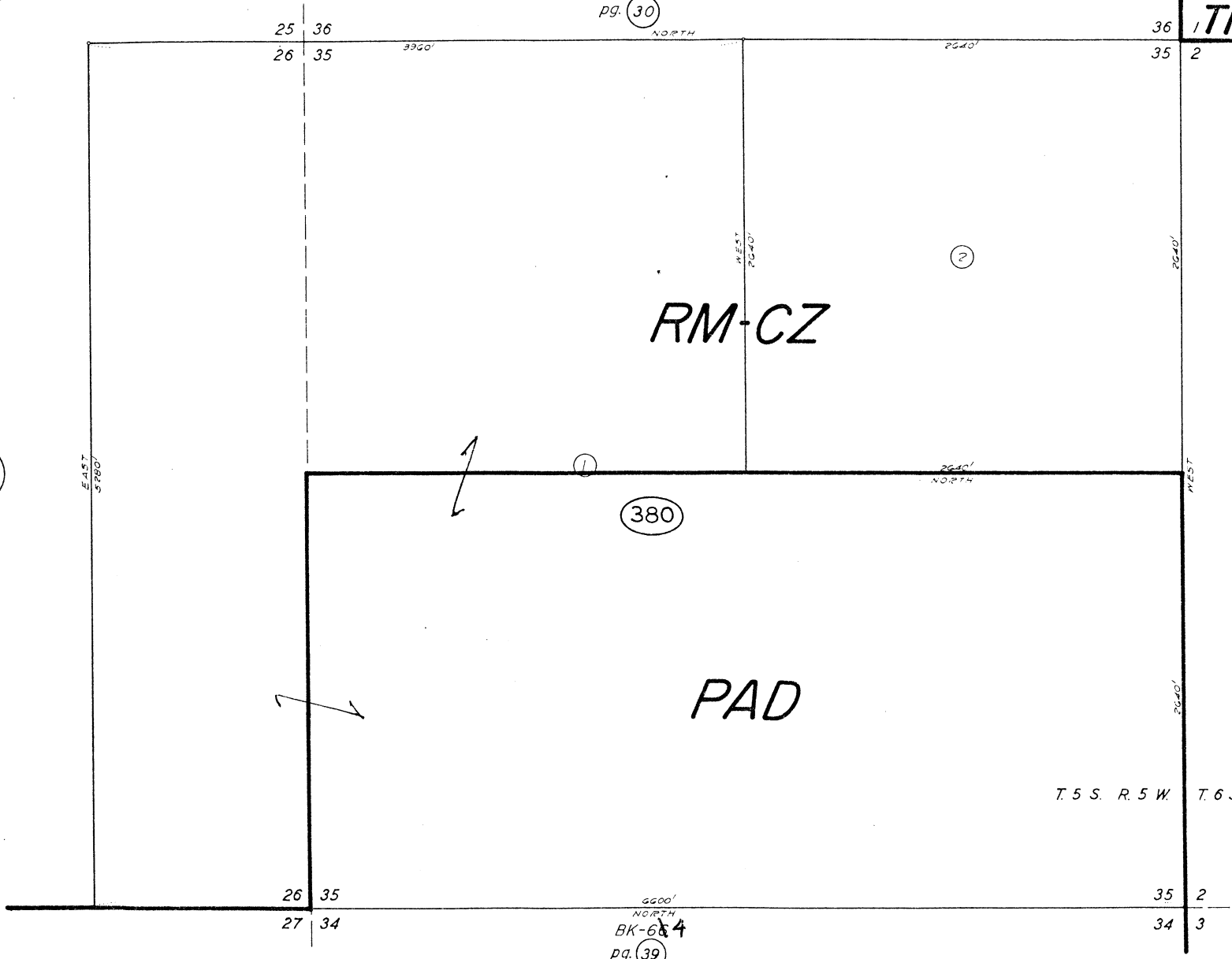
ALL CD  
TPZ-CZ

64-38



BK-66  
pg. 14

BK.56  
pg. 44



T. 5 S. R. 5 W. T. 6 S. R. 5 W.

6400'  
NORTH  
BK-64  
pg. 39

22.4

RM-CZ 26

35

27 34

BK-64  
pg. 38

NORTH  
5280'

TAX CODE AREA

35

34

ALL  
CD

64-39

T.5 S. R.5 W.



BK-66

pg. 12

RM-CZ

PAD

1

390

APPROX

MILLS

CREEK

BK-66

pg. 11

PAD

MIRAMONTES RANCHO

3

RM-CZ

22.1

BK-64  
pg. 37

4557.95'  
57°04'43"N

CABRILLO UNIFIED SCHOOL DISTRICT 4-12

BK.56

pg. 44

BK.56

pg. 45

EAST  
7240'

2640'  
WEST

1800.86'

N 1°04'43"E  
3408.93'

N 57°42'07"W  
110.93'

489.66'  
S 11°04'43"E  
500.94'

1008.18'

2

1008.18'  
N 68°25'08"W  
403.85'

50' BASE  
1800.86'

5012.74'  
N 01°27'12"E