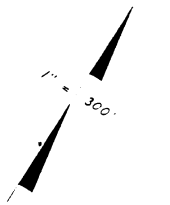


ALL CD 47-32

BK-37
pg. 32

BK-37
pg. 32



(320)
PAD
6

BK-47
pg. 34

BK-47
pg. 16

R-1/S-17/DR

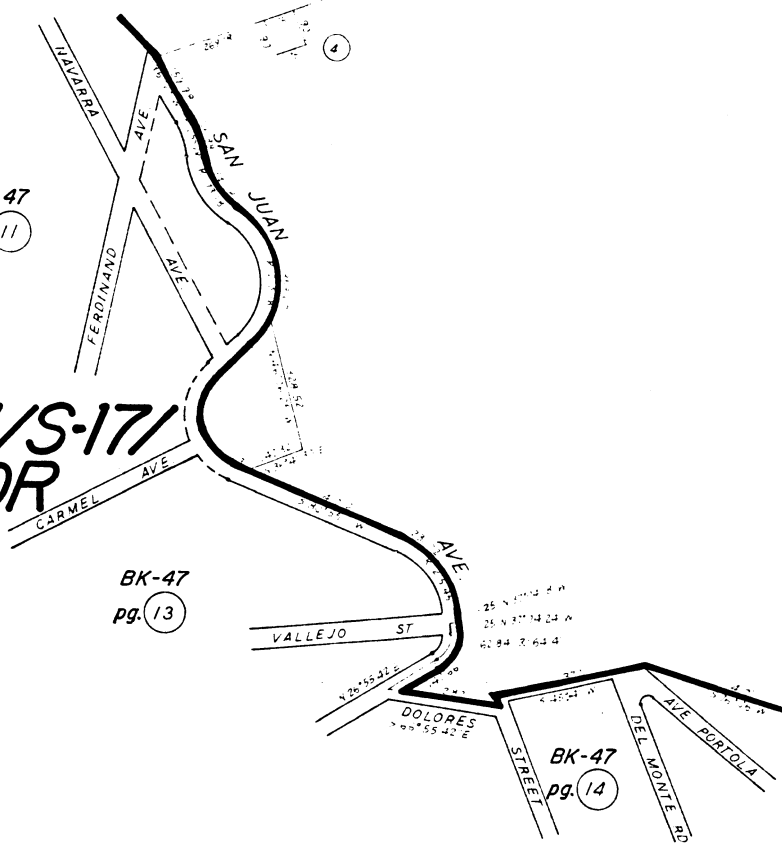
BK-47
pg. 15

BK-47
pg. 14

BK-47
pg. 13

BK-47
pg. 11

R-1/S-17/DR

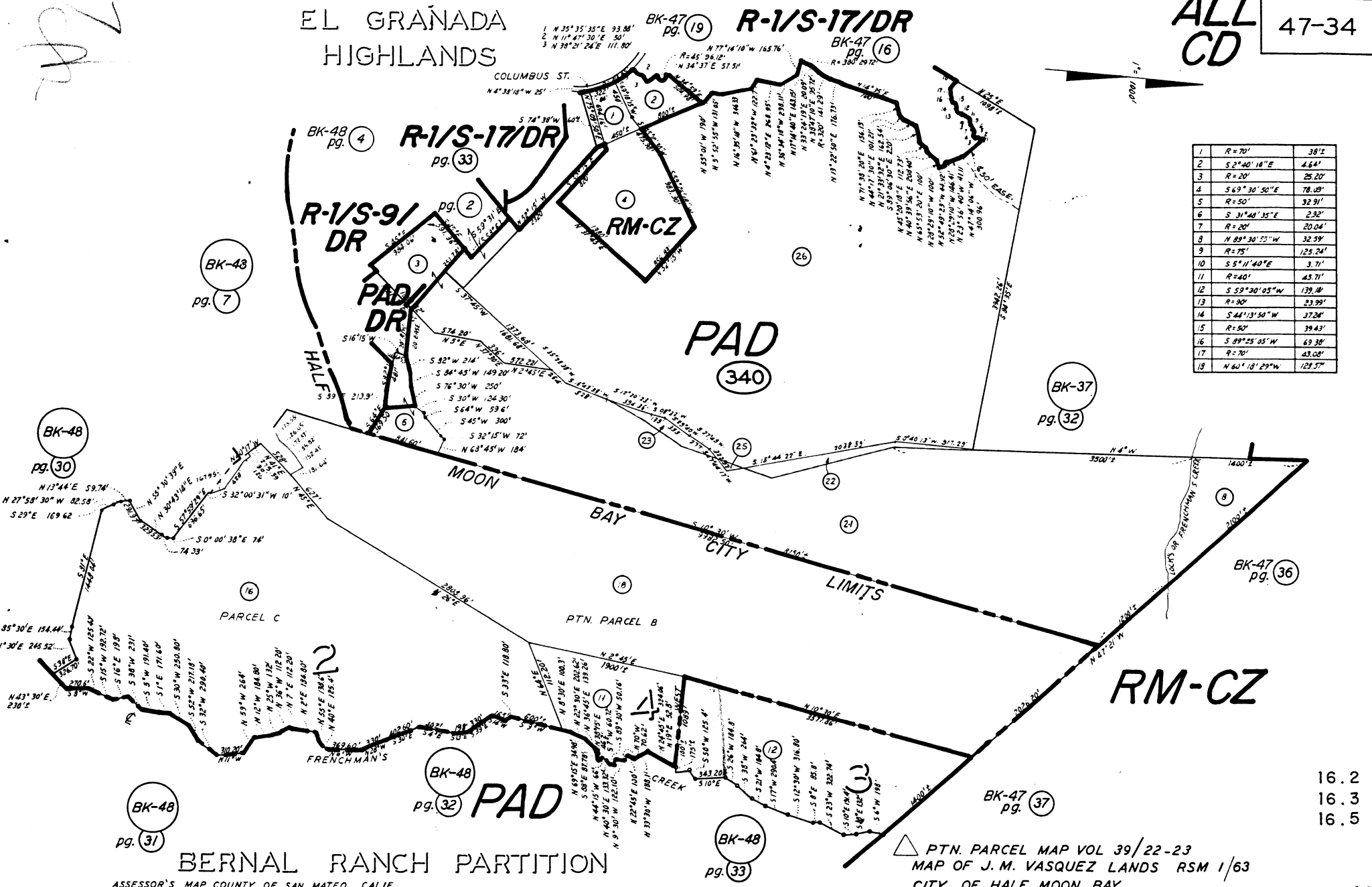


16.2

1

EL GRANADA
HIGHLANDS

ALL
CD 47-34



1	R=70'	38'2"
2	S 2°40' 18" E	4.64'
3	R=20'	25.20'
4	S 69°30' 50" E	78.09'
5	R=50'	32.91'
6	S 31°48' 35" E	2.92'
7	R=20'	20.04'
8	N 89°30' 55" W	32.59'
9	R=75'	125.24'
10	S 5°11'40" E	3.71'
11	R=40'	45.71'
12	S 59°30' 05" W	139.18'
13	R=30'	23.99'
14	S 44°13' 50" W	37.28'
15	R=50'	39.43'
16	S 89°25' 05" W	69.38'
17	R=70'	43.08'
18	N 60°18' 29" W	129.57'

BERNAL RANCH PARTITION

ASSASSOR'S MAP COUNTY OF SAN MATEO, CALIF

PTN. PARCEL MAP VOL 39/22-23
MAP OF J. M. VASQUEZ LANDS RSM 1/63
CITY OF HALF MOON BAY.

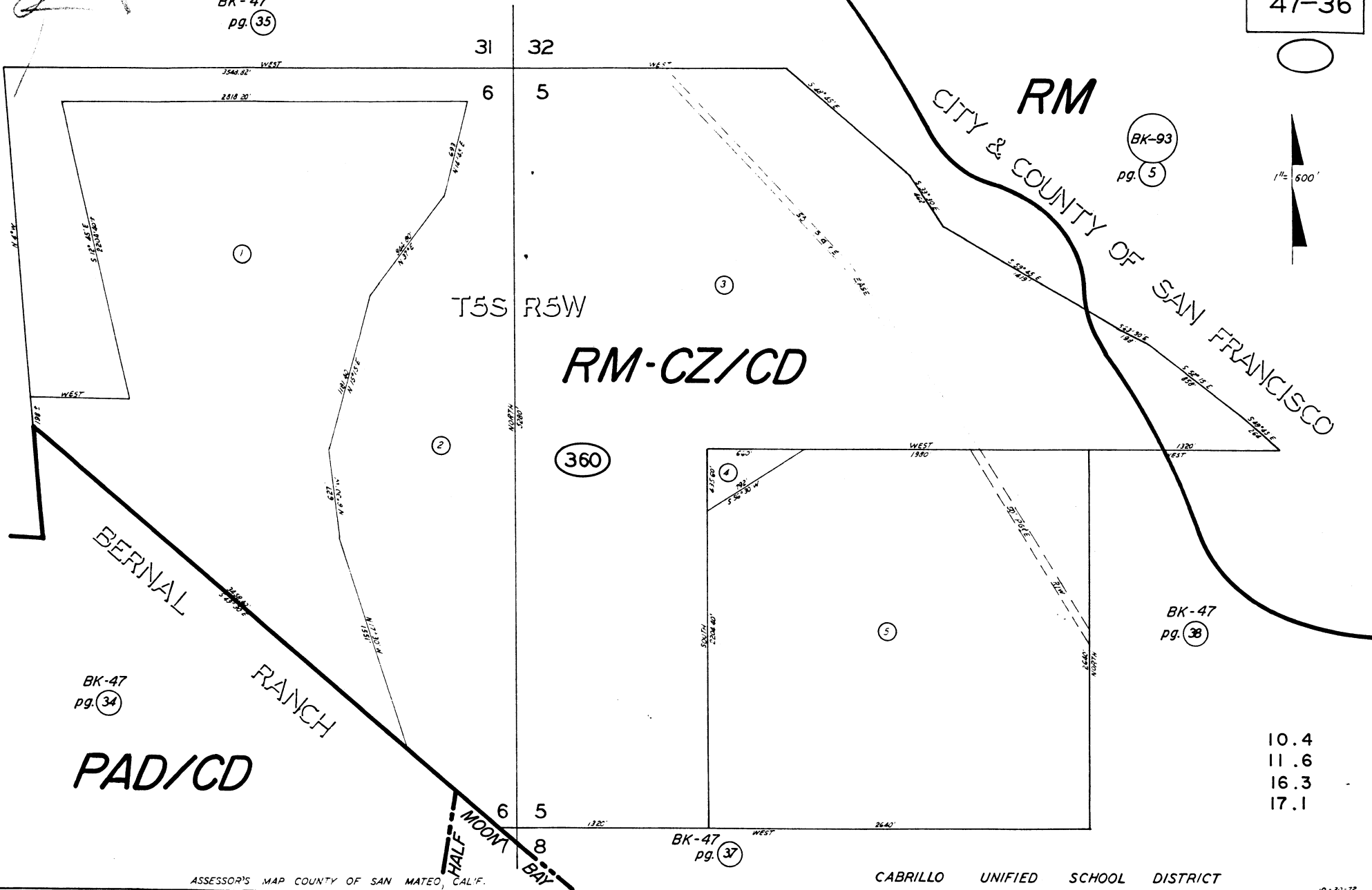
16.2
16.3
16.5

TAX CODE AREA _____

47-36

BK-47
pg. 35

BK-93
pg. 5



BK-47
pg. 34

BK-47
pg. 38

BK-47
pg. 37

- 10.4
- 11.6
- 16.3
- 17.1

TAX CODE AREA _____

ALL
CD

47-37

BK-47
pg. 36

PAD/CD

②.6

5

8

HALF

MOON BAY CITY

LIMITS

BERNAL RANCH

RM-CZ

①
370

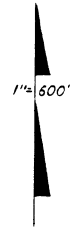
5

4

8

9

T5S R5W



BK-47
pg. 34

BK-48
pg. 34

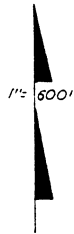
BK-48
pg. 33

PAD

16.3
17.1

1

47-38

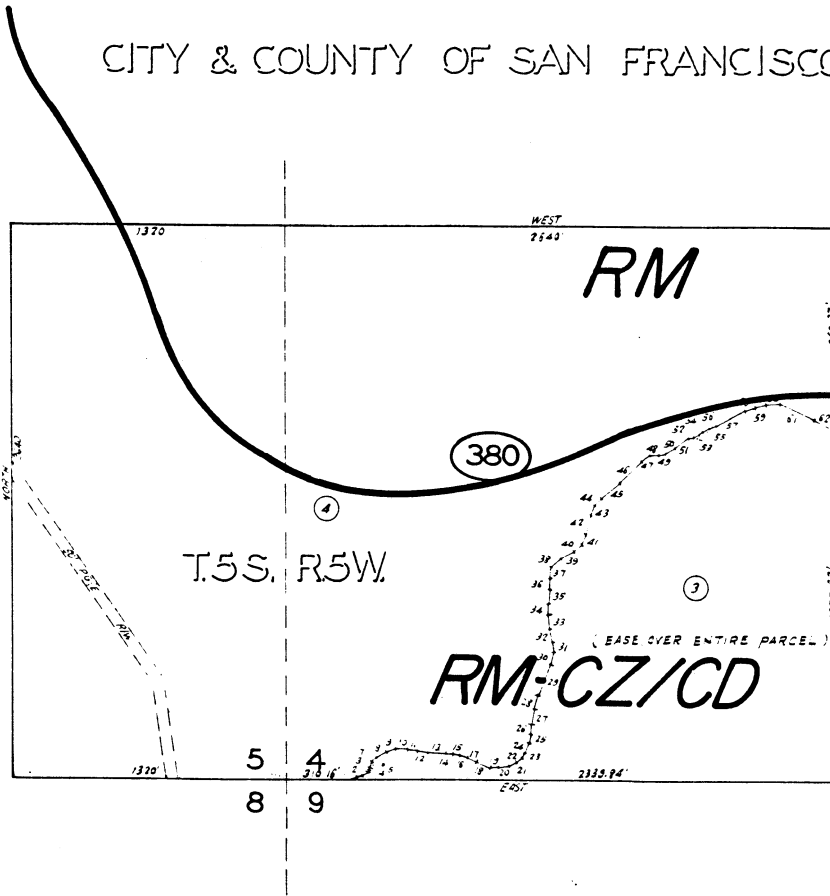


CITY & COUNTY OF SAN FRANCISCO

BK-93

pg. 6

PT	BEARING	DIST	PT	BEARING	DIST	PT	BEARING	DIST
1	N 74° 33' 31" E	31.6	22	N 30° 11' 38" E	36.42	43	N 25° 13' 24" E	47.47
2	N 74° 50' 38" E	25.71	23	N 30° 29' 3" E	18.54	44	N 43° 4' 47" E	43.37
3	N 55° 38' 10" E	23.30	24	N 27° 05' 16" E	36.69	45	N 30° 35' 25" E	11.13
4	N 31° 10' 03" E	11.63	25	N 4° 5' 43" E	34.78	46	N 44° 21' 19" E	149.07
5	N 71° 18' 39" E	19.40	26	N 57° 44' 28" E	47.39	47	N 38° 17' 35" E	51.96
6	N 45° 37' 21" E	17.63	27	N 57° 45' 49" E	7.11	48	N 8° 55' 55" E	40.97
7	N 40° 10' 34" E	35.24	28	N 81° 27' 00" E	78.43	49	N 18° 01' 19" E	32.52
8	N 66° 05' 20" E	17.81	29	N 37° 55' 21" E	158.89	50	N 59° 30' 22" E	48.97
9	N 73° 40' 47" E	45.70	30	N 37° 55' 21" E	34.59	51	N 35° 25' 13" E	82.57
10	S 85° 47' 55" E	37.44	31	N 23° 1' 22" W	40.92	52	N 79° 02' 31" E	32.55
11	S 78° 31' 29" E	22.19	32	N 08° 57' 51" W	83.77	53	N 67° 9' 38" E	15.00
12	S 8° 11' 36" E	46.53	33	N 04° 15' 04" W	76.89	54	N 50° 14' 15" E	19.04
13	S 84° 28' 36" E	94.23	34	N 33° 02' 05" E	53.67	55	N 36° 50' 44" E	37.82
14	S 82° 1' 30" E	30.09	35	N 08° 42' 33" E	59.91	56	N 74° 00' 03" E	47.52
15	S 79° 2' 09" E	37.04	36	N 08° 14' 2" W	56.25	57	N 67° 30' 37" E	16.64
16	S 70° 05' 20" E	41.84	37	N 26° 43' 17" E	57.09	58	N 73° 16' 46" E	5.90
17	S 61° 33' 43" E	87.77	38	N 46° 18' 09" E	87.00	59	N 74° 49' 35" E	43.65
18	S 65° 29' 03" E	87.76	39	N 45° 43' 45" E	77.53	60	N 85° 22' 20" E	77.2
19	S 89° 10' 00" E	38.73	40	N 45° 00' 33" E	37.43	61	S 63° 40' 03" E	83.52
20	N 3° 58' 19" E	43.27	41	N 33° 55' 03" E	47.78	62	N 58° 18' 16" E	123.58
21	N 67° 08' 50" E	37.43	42	N 16° 07' 05" E	100.91			



BK-47
pg. 36

BK-48
pg. 34

17.1
17.2